

PUBLIC INVOLVEMENT PLAN

Project Name: Old Lake Wilson Road PD&E Study
Project Limits: From County Road 532 (CR 532) to Sinclair Road
County/State: Osceola County, Florida
Financial Management Number: 448781-1
Federal Aid Project Number: To be determined
Efficient Transportation Decision Making (ETDM) Number: To be determined

In accordance with Part 1, Chapter 11 of the FDOT *Project Development and Environment (PD&E) Manual*, this Public Involvement Plan is submitted to Osceola County for review and approval.

Submitted by: Jesse Blouin, AICP
Consultant Project Manager

Jesse Blouin
Signature

Inwood Consulting Engineers, Inc.

2-8-2021
Date

The Environmental review, consultation, and other actions required by applicable federal environmental laws for this project are being, or have been, carried-out by Osceola County pursuant to 23 U.S.C. § 327 and a Memorandum of Understanding dated December 14, 2016, and executed by FHWA and FDOT.

Approved by: Joshua DeVries, AICP
Project Manager

Joshua DeVries
Signature

Osceola County

2/5/21
Date



Table of Contents

I. DESCRIPTION OF PROPOSED IMPROVEMENT	1
II. PROJECT BACKGROUND.....	2
III. PROJECT STATUS	4
IV. PROJECT GOALS.....	4
V. IDENTIFICATION OF ELECTED OFFICIALS AND AGENCIES	4
VI. IDENTIFICATION OF AFFECTED COMMUNITIES AND STAKEHOLDERS.....	9
VII. OUTREACH ACTIVITIES	10
VIII. COORDINATION WITH FDOT.....	15
IX. ANALYSIS AND SUMMARY OF PUBLIC COMMENTS.....	15
X. PUBLIC HEARING	15
XI. PUBLIC HEARING FOLLOW-UP	17
XII. PUBLIC INVOLVEMENT DURING DESIGN	17

Figures

Figure 1 Project Location Map.....	3
Figure 2 Public Outreach Activity Schedule:	14

Appendices

APPENDIX A	Public Involvement Contact Lists
APPENDIX B	Sociocultural Data Report

PUBLIC INVOLVEMENT PLAN
Old Lake Wilson Road PD&E Study
From CR 532 to Sinclair Road
Osceola County, Florida

The purpose of this Public Involvement Plan (PIP) is to outline the public involvement activities to take place during the Old Lake Wilson Road PD&E Study. The PIP will assist in guiding the process of providing information to, and obtaining input from, concerned citizens, agencies, private groups, landowners, business owners, and governmental entities. The overall goal of this plan is to help ensure that the study reflects the values and needs of the communities it is designed to benefit. A schedule of events and related items are included herein.

This plan is in compliance with the Florida Department of Transportation's *Project Development and Environment (PD&E) Manual*, Part 1, Chapter 11.

I. DESCRIPTION OF PROPOSED IMPROVEMENT

Financial Management Number:	<u>448781-1</u>
Federal Aid Project Number:	<u>To be determined</u>
Project Limits:	<u>From CR 532 to Sinclair Road</u>
Proposed Activity:	<u>Project Development and Environment (PD&E) Study</u>
Class of Action:	<u>Type II Categorical Exclusion</u>

Project Contact Information

For additional information regarding this project contact:

Joshua DeVries, AICP

Project Manager

1 Courthouse Square, Suite 3100

Kissimmee, FL 34741

(407) 742-0565

Joshua.DeVries@Osceola.org

Jesse Blouin, AICP

Consultant Project Manager

3000 Dovera Drive, Suite 200

Oviedo, FL 32765

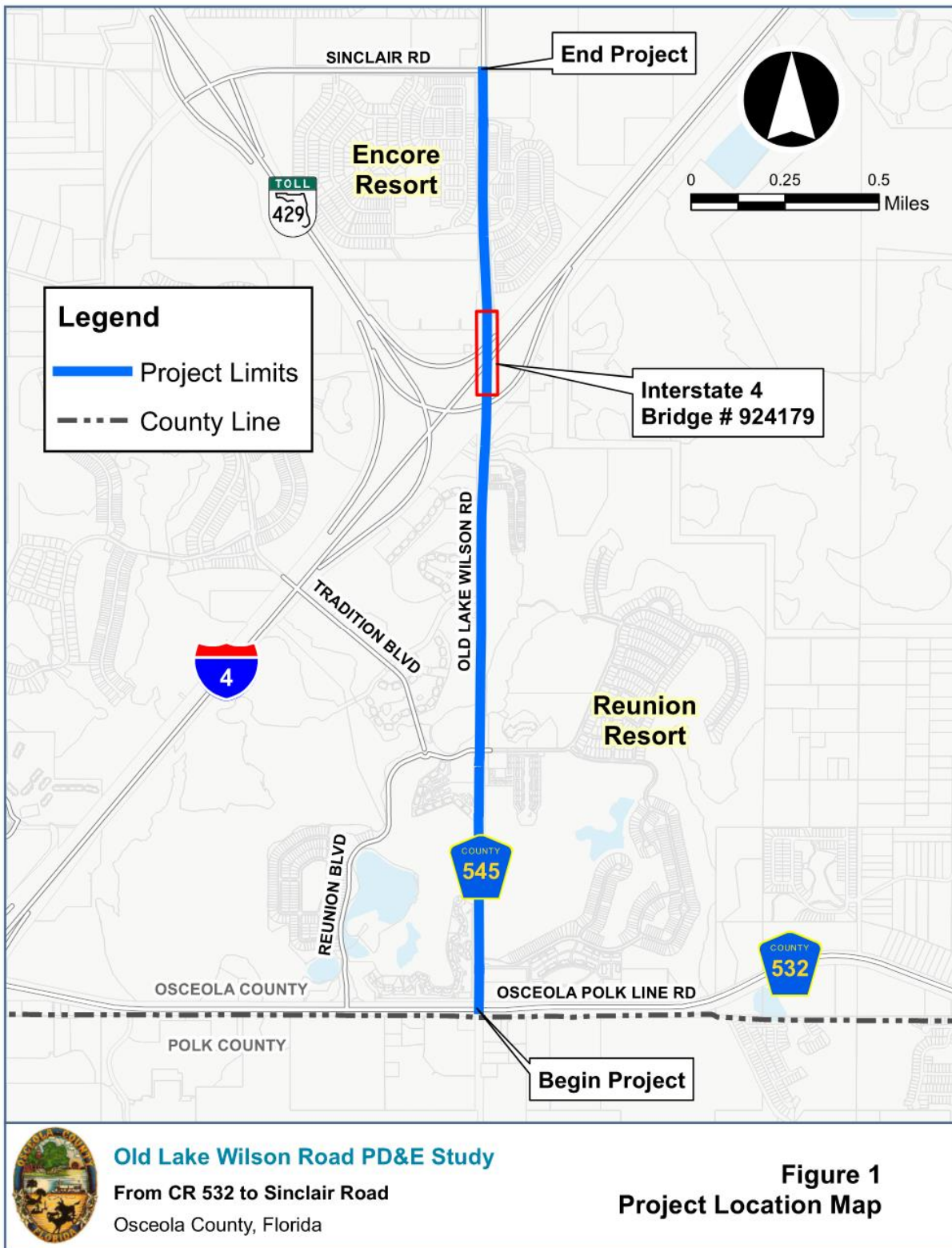
(407) 971-8850

Jblouin@inwoodinc.com

II. PROJECT BACKGROUND

The Project Development and Environment (PD&E) Study will evaluate alternatives for the two lane to four lane widening of Old Lake Wilson Road from County Road 532 to Sinclair Road, a distance of approximately 2.5 miles. The project also involves widening or replacing the existing bridge over Interstate 4 (I-4) and evaluating the addition of bicycle and pedestrian features throughout the project corridor. The project location map is provided in **Figure 1**.

Figure 1
Project Location Map



III. PROJECT STATUS

The project is located within the jurisdiction of MetroPlan Orlando, the Metropolitan Planning Organization (MPO) covering Orange, Osceola and Seminole Counties. The PD&E Study is documented in MetroPlan Orlando's Fiscal Year (FY) 2021-2025 Transportation Improvement Program (TIP) in FY 2021. The project will need to be documented in MetroPlan Orlando's 2045 Long Range Transportation Plan (LRTP) / Metropolitan Transportation Plan (MTP). There is currently no funding for the design, right-of-way, or construction phases; therefore, additional coordination will take place during the PD&E Study phase to meet planning consistency requirements.

IV. PROJECT GOALS

The following project goals have been identified for the public involvement component of this study:

- Implement a tailored public involvement strategy to educate the public on the purpose of and need for the project while alleviating potential causes for concern
- Obtain meaningful input on the alternatives being evaluated
- Initiate and carry out one-way and two-way communication strategies
- Delineate community outreach to coincide with scheduled technical activities
- Target key stakeholders for inclusion in the public involvement process
- Provide ample opportunity for public input
- Build consensus for the proposed improvements

V. IDENTIFICATION OF ELECTED OFFICIALS AND AGENCIES

The following local, regional, state, or federal agencies having an interest in this project due to jurisdictional review or expressed interest will be contacted directly through the Advance Notification (AN) process at the outset of the project in accordance with the PD&E Manual, Part 1, Chapter 3, Preliminary Environmental Discussion and Advance Notification. As other agencies are identified, they also will be listed and contacted. The full Public Involvement Contact List is provided in **Appendix A**.

State:

FDOT Office of Environmental Management, Project Delivery Coordinator, Denise Rach
FDOT Office of Environmental Management, Project Delivery Coordinator, Brittany Bianco
FDOT Office of Environmental Management, State Environmental Process Administrator, Katasha Cornwell
FDOT Office of Environmental Management, Project Screening and Technologies Administrator, Peter McGilvray
FDOT Office of Environmental Management, Engineer, Michael Pennington
Florida Department of Agriculture and Consumer Services, State Forest Ecologist, Brian Camposano
Florida Department of Agriculture and Consumer Services, Vincent Morris
Florida Department of Agriculture and Consumer Services, Mark Kiser
Florida Department of Economic Opportunity, Planning Analyst, Matt Preston
Florida Department of Environmental Protection, Clearinghouse Coordinator, Chris Stahl

Florida Department of State, Compliance Review Supervisor, Jason Aldridge
 Florida Department of State, Archaeologist, Adrienne Daggett
 Florida Department of State, Historian/Historic Preservation Planner, Alyssa McManus
 Florida Department of State, Historic Preservationist/Archaeologist, Lindsay Rothrock
 Florida Fish and Wildlife Conservation Commission, Director of Conservation Planning Services, Jennifer Goff
 Florida Fish and Wildlife Conservation Commission, Program Administrator, Jason Hight

Federal:

Natural Resources Conservation Service, Soils Scientist, Leroy Crockett
 U.S. Army Corps of Engineers, Chief, Panama City Permits Section, Andrew Kizlauskas
 U.S. Army Corps of Engineers, Project Manager, Cynthia Ovdenk
 U.S. Army Corps of Engineers, Biologist, Mark Tamblyn
 U.S. Army Corps of Engineers, Project Manager, Randy Turner
 U.S. Army Corps of Engineers, ETAT Member, Veronica Beech
 U.S. Environmental Protection Agency, NEPA Practitioner, Ntale Kajumba
 U.S. Environmental Protection Agency, Region 4, Biologist/Life Scientist, Alya Singh-White
 U.S. Environmental Protection Agency, Region 4, Environmental Scientist, Amanetta Somerville
 U.S. Environmental Protection Agency, Region 4, Life Scientist, Roshanna White
 U.S. Fish and Wildlife Service, Fish and Wildlife Biologist, Mark Cantrell
 U.S. Fish and Wildlife Service, Fish and Wildlife Biologist, John Wrublik
 U.S. Forest Service, Forest Engineer, Erika Davis
 U.S. National Park Service, Environmental Protection Specialist, Anita Barnett
 U.S. Coast Guard, Bridge Management Specialist, Jennifer Zercher
 U.S. Coast Guard, Bridge Management Specialist, Marty Bridges
 U.S. Coast Guard, Commander - Seventh Coast Guard District, Randall Overton
 National Marine Fisheries Service, Fish Biologist, Jennifer Schull

Regional:

FDOT District 5:

Karen Snyder	Project Development Manager
Lorena Cucek	FDOT District 5 Liaison
William Walsh	Environmental Manager
Su Hao	Project Management Engineer

Florida's Turnpike Enterprise:

Henry Pinzon	Environmental Management Engineer
Rax Jung	Development Engineer
Philip Stein	Environmental Manager
Nicola Liquori	Executive Director and CEO
Christina Colon	Director of Transportation Development

Central Florida Expressway Authority:

Laura Kelley	Executive Director
Will Hawthorne	Director of Engineering
Dana Chester	Manager of Engineering
Glenn Pressimone	Chief of Infrastructure

East Central Florida Regional Planning Council:

Hugh Harling, P.E.	Executive Director
Tara McCue, AICP	Director of Planning and Community Development

MetroPlan Orlando:

Gary Huttman, AICP	Executive Director
Nick Lepp, AICP	Director of Transportation Planning
Virginia Whittington	Director of Regional Partnerships
Cathy Goldfarb	Senior Board Services Coordinator
Keith Caskey, AICP	Manager of Planning Services

Reedy Creek Improvement District:

John Classe	District Administrator
Ann Blakeslee	Deputy District Administrator

Polk Transportation Planning Organization:

Chandra Frederick	Executive Director
Ryan Kordek	Transportation Planning Administrator
Julia Davis	Senior Transportation Planner
Lorenzo Thomas	Senior Transportation Planner
Lori Belangia	Senior Transportation Planner

Lynx:

James E. Harrison	Chief Executive Officer
-------------------	-------------------------

South Florida Water Management District:

Trisha Stone	Lead Environmental Analyst
Annette Burkett	Engineering Specialist

Native American Tribes:

Jason Watts	Director, FDOT Native American Coordinator
-------------	--

Miccosukee Tribe of Indians of Florida:

Billy Cypress	Chairman
Kevin Donaldson	Environmental Specialist

Seminole Tribe of Florida (STOF):

Paul Backhouse, Ph.D.	Senior Director
Anne Mullins	Director, Heritage and Environmental Office
Bradley Mueller	Compliance Review Supervisor
Alison Swing	Senior Maintenance Specialist
David Echeverry	Compliance Reviewer

Poarch Band of Creek Indians of Alabama:

Stephanie A. Bryan	Tribal Chair
Larry D. Haikey	PBCI Tribal Historic Preservation Officer

Seminole Nation of Oklahoma:

Gregory Chilcoat	Principal Chief
Brigita Leader	Interim Director

Local Elected and Appointed Officials:

Florida State Senators for Local Districts:

Victor Torres, Jr.	Florida Senate, District 15
Kelli Stargel	Florida Senate, District 22

Florida State Representatives for Local Districts:

Josie Tomkow	Florida Representative, District 39
--------------	-------------------------------------

Federal Delegation:

Rick Scott	U.S. Senate
Marco Rubio	U.S. Senate
Darren Soto	U.S. Representative, District 9

Osceola County:

Elected Officials:

Peggy Choudhry	Commissioner, District 1
Jessica Valero	Commissioner's Assistant, District 1
Viviana Janer	Commissioner, District 2
Brenda Hernandez	Commissioner's Assistant, District 2
Brandon Arrington	Commissioner, District 3
Linda Tolete	Commissioner's Assistant, District 3
Cheryl Grieb	Commissioner, District 4
Ally Vallecillo	Commissioner's Assistant, District 4
Ricky Booth	Commissioner, District 5
Nancy David	Commissioner's Assistant, District 5
Kevin Soto	Clerk of Court
Katrina Scarborough	Property Appraiser
Bruce Vickers	Tax Collector
Marco Lopez	Sheriff
Mary Jane Arrington	Supervisor of Elections
Terry Castillo	Osceola County School Board, District 1
Julius Melendez	Osceola County School Board, District 2
Jon Arguello	Osceola County School Board, District 3
Clarence Thacker	Osceola County School Board, District 4
Robert Bass	Osceola County School Board, District 5

Appointed Officials:

Don Fisher	County Manager
Iris Soto	Assistant to the County Manager
Beth Knight	Deputy County Manager
Sam Jenkins	Assistant to the Deputy County Manager
Donna Renberg	Assistant County Manager
Miriam Santiago	Assistant to the Assistant County Manager

Staff:

Justin Eason	Planner II
Kathy Lee	Traffic Engineer
Alex Laffey	Signal Timing Engineer
Tawny Olore, PE	Transportation and Transit Executive Director
Marianne Arneberg	Senior Project Manager
Chris Brumbaugh	Communications Manager
Bob Mindick	Environmental Lands Conservation Program Director
David Tomek	Community Development Services Director
Bob Porter	Economic Development Executive Director
Sue Gosselin	Stormwater Program Manager
William Litton	Emergency Management Director
Larry Collier	Fire Rescue
Debra Pace	Superintendent, Osceola County Schools
Rhonda Blake	Director of Planning Services, Osceola County Schools
Danielle Slaterpryce	Public Works Director

Polk County:

Elected Officials:

George Lindsey	Commissioner, District 1
Rick Wilson	Commissioner, District 2
Bill Braswell	Commissioner, District 3
Martha Santiago	Commissioner, District 4
Neil Combee	Commissioner, District 5
Stacy M. Butterfield	Clerk of Court and Comptroller
Marsha M. Faux	Property Appraiser
Joe G. Tedder	Tax Collector
Grady Judd	Sheriff
Lori Edwards	Supervisor of Elections
William Allen	Polk County School Board, District 1
Lori Cunningham	Polk County School Board, District 2
Sarah Fortney	Polk County School Board, District 3
Sara Beth Reynolds	Polk County School Board, District 4
Kay Fields	Polk County School Board, District 5
Lynn Wilson	Polk County School Board, District 6
Lisa Miller	Polk County School Board, District 7

Appointed Officials:

Bill Beasley	County Manager
Ryan Taylor	Deputy County Manager
Lea Ann Thomas	Deputy County Manager
Joe Halman, Jr.	Deputy County Manager
Todd Bond	Deputy County Manager
Chandra Frederick	Assistant County Manager

Staff:

Mianna Nelson	Communications Director
Paul Womble	Emergency Management Director
Robert Weech	Fire Rescue Director
John Bohde	Land Development Director
Ronnie Blackshear	Long Range Planning Director
Chandra Frederick	Planning and Development Manager
Gaye Sharpe	Parks and Natural Resources Director
Jay Jarvis	Roads and Drainage Director
Tamara Richardson	Utilities Director
Jacqueline M. Byrd	Superintendent, Polk County Public Schools
Jill Seymour	Director of Transportation, Safe Schools, and Vehicle Safety, Polk County Schools

Reunion East Community Development District:

Mark Greenstein	Chairman, Seat 1
Steven M. Goldstein	Assistant Secretary, Seat 2
Don Harding	Vice Chairman, Seat 3
John R. Dryburgh	Assistant Secretary, Seat 4
Trudy Hobbs	Assistant Secretary, Seat 5

Reunion West Community Development District:

Sharon Harley	Assistant Secretary, Seat 1
Graham Staley	Assistant Secretary, Seat 2
Michael Mancke	Assistant Secretary, Seat 3
Mark Greenstein	Chairman, Seat 4
David Burman	Vice Chairman, Seat 5

VI. IDENTIFICATION OF AFFECTED COMMUNITIES AND STAKEHOLDERS

The project limits fall completely within unincorporated Osceola County. A map of the project limits is provided on **Figure 1**. The demographics of the study area were obtained through a Sociocultural Data Report (SDR) analysis, which is a feature in FDOT’s Environmental Screening Tool (EST). A copy of the SDR is included in **Appendix B**. Based on the language trends in the study area, approximately 2.27% of the population “speaks English not at all” and 5.4% of the population speak English “not well” or “not at all”, Limited English Proficiency (LEP) accommodations are likely not required. However, translation services will be available, as requested.

The following local, state, and national public interest groups or organizations having a direct or expressed interest in the project study have been identified and will be contacted as applicable. Additional stakeholders will be added throughout the study. It should be noted that given the conditions in the study area, much of the coordination will take place through homeowner’s associations and property managers.

Environmental / Non-Governmental Organizations:

1000 Friends of Florida
Central Florida Sierra Club
The Nature Conservancy
Kissimmee Valley Audubon Society

Homeowner Associations and Property Managers:

Kingwood International Resorts
Artemis Lifestyles
Governmental Management Services – Central Florida, LLC
Reunion Resort
Indian Ridge Homeowners Association
Encore and the Sentosa Apartments

VII. OUTREACH ACTIVITIES

Various techniques will be used to notify the public of the proposed transportation improvements and to provide continuing opportunities for public engagement in the decision-making process. The table below lists the media outlets where press releases and other information will be disseminated to throughout the PD&E Study.

Newspapers	
<i>Orlando Sentinel</i> 633 North Orange Ave Orlando, FL 32801 (407) 420-5000 styner@sunsentinel.com	<i>The Osceola News Gazette</i> 22 W. Monument Ave, Suite 5 Kissimmee, FL 34744 (407) 846-7600 publisher@osceolanewsgazette.com
Television	
Local 6 (WKMG-TV) 4466 N. John Young Parkway Orlando, FL 32804 (407) 521-1200 advertising@wkmg.com	WFTV-TV 490 E. South St. Orlando, FL 32801 (407) 841-9000 mario.mendoza@wftv.com
WESH 2 1021 N. Wymore Road Winter Park, FL, 32789 (407) 645-2222 lboutte@hearst.com	Fox 35 35 Skyline Drive Lake Mary, FL 32746 (407) 644-3535 christina.dettore@foxtv.com
Channel 13 20 N. Orange Ave., Suite 13 Orlando, FL 32801 (407) 513-1300 Susan.DAstoli@charter.com	

Radio	
WMFE, 90.7 FM 11510 East Colonial Drive Orlando, Florida 32817 (407) 273-2300 wmfenews@wmfe.org	WFLA-AM, 93.1 FM 2500 Maitland Ctr. Pkwy, Suite 401 Maitland, FL 32751 (407) 916-7800
WUCF, 89.9 FM 12461 Research Parkway, Suite 550 Orlando, FL 32826 (407) 823-0899 jennifer.cook@wucf.org	WDBO, 580 AM 4192 N John Young Pkwy Orlando, FL 32804 (407) 290-0058 JC.Campese@cmg.com

At a minimum, the following techniques will be employed to notify the public of opportunities to obtain information and participate in the PD&E Study process.

Letters/Newsletters: Invitational and informational letters/emails and newsletters will be distributed to elected and appointed officials, property owners/tenants, business owners/operators, and interested parties, as feasible. It is anticipated that three newsletters will be distributed for this study: at the study kick-off, at the Alternatives Public Meeting and at the Public Hearing. Notices will be mailed to residences and businesses located directly along the project corridor as deemed necessary by Osceola County.

News/Press Releases: News/press releases will be transmitted to media outlets listed above, and others as applicable, prior to the Alternatives Public Meeting and Public Hearing.

Public Notices/ Ads: Public advertisement will consist of a display advertisement published in *Orlando Sentinel*, the newspaper with the largest circulation, once prior to the Alternatives Public Meeting and twice prior to the Public Hearing. Additionally, announcements of both the Alternatives Public Meeting and Public Hearing will be published in the Florida Administrative Register at least seven days prior to the events.

Florida Administrative Register

R.A. Gray Building
 500 South Bronough Street
 Tallahassee, FL 32399-0250
 (850) 245-6270
<https://www.flrules.org/>

Public

Announcements: In order to distribute PD&E Study information to a broader segment of the community, the newsletters may be made available to organizations such as property managers, neighborhood/civic groups, Osceola and Polk

Counties, HOA's, and churches to publish in existing newsletters and on websites and social media. Any such correspondence will be coordinated through Osceola County.

Direct Mail List:

The following will be contacted by direct mail in order to obtain input throughout the project development process and/or in order to provide project information:

- Those whose property lies, in whole or part, within at least 300 feet of the study area as well as other local citizens who may be impacted by the construction of this project. This portion of the mailing list will be based on the Osceola County Property Appraiser's tax rolls.
- Local elected and appointed public officials or individuals who request to be placed on the mailing list.
- Public and private groups, organizations, agencies, or businesses that request to be placed on the mailing list.

Techniques:

Working Group: A working group will be organized at the beginning of the project. The Working Group will include Florida's Turnpike, FDOT, CFX, and Osceola County. The Working Group will meet twice over the course of the two-year study to coordinate projects such as the I-4 Poinciana Connector and the Old Lake Wilson Road bridge over I-4.

Presentations to Local Officials: Presentations will be given to local officials and agencies, as requested, prior to the Alternatives Public Meeting and the Public Hearing.

Alternatives Public Meeting: One Alternatives Public Meeting will be conducted to present the alternatives being considered and to obtain comments from the public. The Heritage Crossing Community Center could be used, in addition to Microsoft Teams, for the subject meeting.

Public Hearing: A formal public hearing, as required by federal regulations and state law will be held.

Informal Meetings: In addition to the scheduled public meetings, there will be approximately 12 additional meetings with the public, elected and appointed officials, public agencies, or civic groups.

Project Website: A website will be hosted for this project at <http://www.ImproveOldLakeWilsonRoad.com>. The website will provide information on the project purpose, schedule, meetings, documents, and contact information. The website address will be included in all public involvement materials. It may be advantageous to link the project website to those of other organizations to enhance one-way communication.

**Coordination with
Adjacent Projects:**

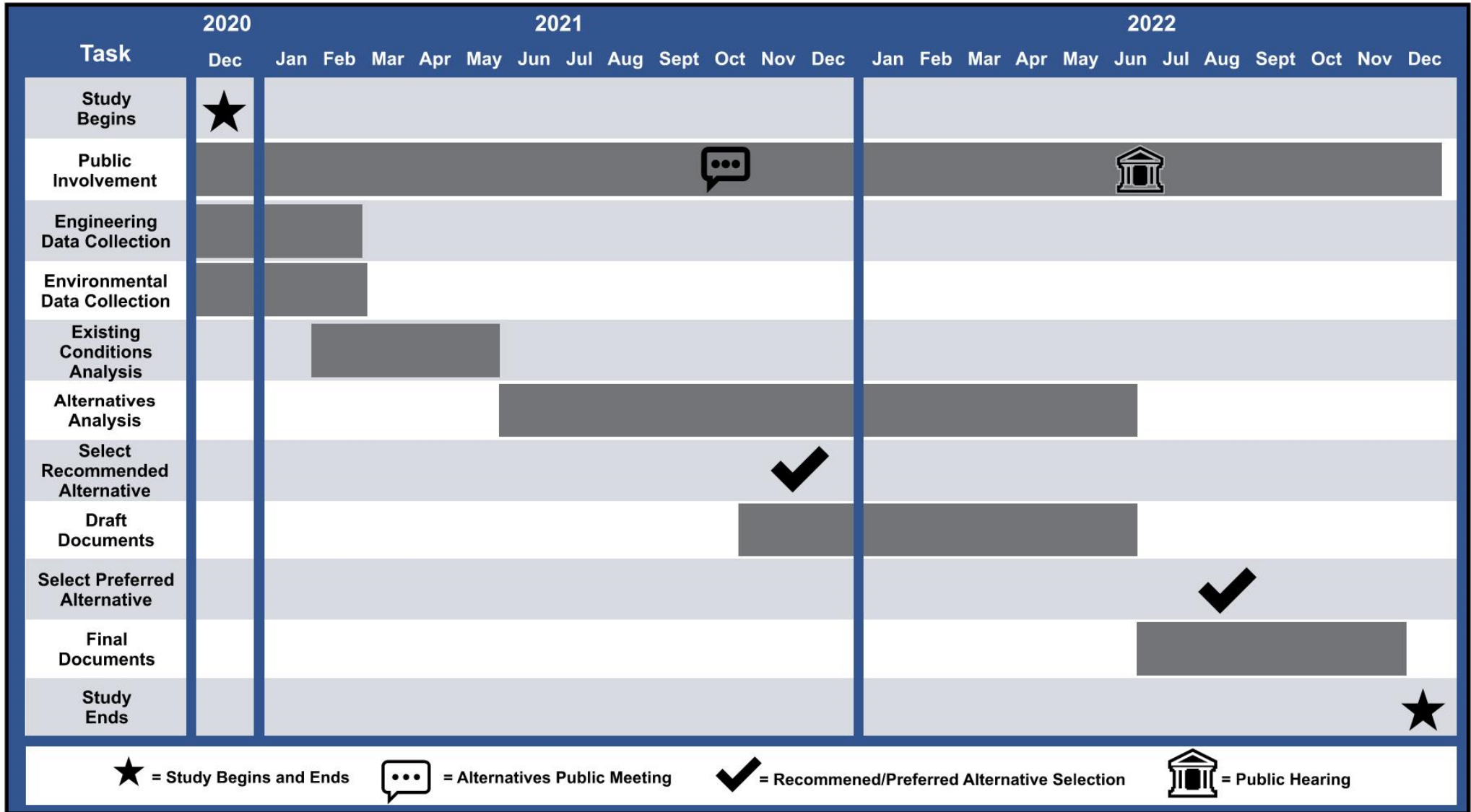
The project team will coordinate with the following pertinent projects and studies, as necessary:

- **FDOT:** I-4 / CR 532 Interchange (444187-1): Construction of a new interchange to begin in 2021.
- **FDOT:** I-4 Beyond the Ultimate from CR 532 to Osceola Parkway (FM 431456-1): Final design ongoing.
- **Central Florida Expressway Authority:** CR 532 from Old Lake Wilson Road to US 17/92 (Project #538-235): Final design for a two to four lane facility.
- **Central Florida Expressway Authority:** SR 538 from CR 532 to South of US 17/92 (Project # 538-235A-20): Final design for a new expressway.
- **Florida's Turnpike Enterprise:** Poinciana Parkway Extension PD&E Study (FM 446581-1): A PD&E Study evaluating the extension of the Poinciana Parkway (SR 538) from CR 532 to the I-4/SR 429 Interchange. This project also included the widening of SR 429 from Sinclair Road to Seidel Road.
- **Polk County:** Lake Wilson Road from Ronald Reagan Parkway to CR 532: Final design for a two to four lane facility. Construction is expected to begin in fiscal year 2021.

**Public Outreach
Activity Schedule:**

The initial public outreach schedule and associated activities are provided in **Figure 2**.

Figure 2
Public Outreach Activity Schedule:



VIII. COORDINATION WITH FDOT

Project information will be provided to the FDOT for review and comment prior to the Alternatives Public Meeting and the Public Hearing. Additional coordination will take place for technical, document and other reviews.

IX. ANALYSIS AND SUMMARY OF PUBLIC COMMENTS

This activity will occur throughout the duration of the study and consists of maintenance of files, newspaper clippings, letters, emails, and other direct contact, and summarizing comments received as a result of the public meetings or other public outreach. Comments received via the project website will be sent to the Consultant project manager. The response will be sent to the County for review prior to distribution. The final correspondence will then be transmitted, printed to a PDF and saved to the project file. A Comments and Coordination Report will be developed to document public meeting results and recommendations. This report will also include the overall input received throughout the project development process. All comments received will be considered during the development, evaluation and selection of the project alternatives.

X. PUBLIC HEARING

In compliance with the Project Development and Environment (PD&E) Manual, 23 CFR 771, and Section 339.155, F.S., a public hearing will be held.

Public Hearing Site: The public hearing will be held at an appropriate facility convenient to the study area. As with the Alternatives Public Meeting, a potential meeting location could be the Heritage Crossing Community Center.

Public Advertisement: Public advertisement will appear in the *Orlando Sentinel* twice (at least 15 days and no more than 30 days) prior to the public hearing.

- Orlando Sentinel
633 North Orange Ave
Orlando, FL 32801
<http://www.orlandosentinel.com/>

Additionally, announcement of the public hearing will be published in the *Florida Administrative Register* at least seven days prior to the hearing and will be posted on the project website, <http://www.ImproveOldLakeWilsonRoad.com>.

Letters of Invitation: Letters will be mailed to all property owners, as required by Section 339.155, F.S., notifying them of the upcoming public hearing. Elected and appointed officials will receive email notification from the Osceola County Project Manager.

Hearing Presentation: Slide presentations and/or video presentations, aerial maps, graphics, and handouts will be prepared to supplement the Public Hearing presentation.

Transcript: A verbatim transcript of the public hearing will be compiled to include written comments received at the Public Hearing and written comments received within the established comment period. All public hearing documentation (handouts, presentation, graphics, etc.) will be included with the transcript. The transcript will include a script of the recorded presentation, if applicable. If Microsoft Teams is also utilized as a virtual option to the Public Hearing, a recording of the Public Hearing will also be provided.

**Documents for
Public Review:**

All draft documents to support the PD&E Study phase of the project will be available for public review at least 21 calendar days prior to the public hearing date.

**Locations of
Documents for
Public Review:**

Public notices will be provided in the Public Hearing advertisement and by mailed invitational letters as to where the study documents are located for public review. The study documents will be available for review from 21 days prior to the Public Hearing through 10 days after the public hearing. Potential Sites for Public Review of Study Documents:

- **Osceola County BOCC Administrative Building**
1 Courthouse Square
Suite 3100
Kissimmee, FL 34741

- **West Osceola Branch Library**
305 Campus Street
Celebration, FL 34747

**Title VI and
Related Statutes:**

Information about the Title VI Program will be provided in the presentation, by handout, signage, and through availability of personnel, on the Title VI Program and the Relocation Assistance Program.

**Americans with
Disabilities Act
Compliance:**

Notification of Osceola County's intent to comply with the Americans with Disabilities Act will be provided in the public advertisements, in invitational letters to property owners/tenants and local officials, in handouts, and by selection of a public hearing site that meets ADA requirements.

XI. PUBLIC HEARING FOLLOW-UP

The following procedures will occur after the public hearing.

Responses: Responses to all letters received as a result of the hearing process and questions and comments not answered during the public hearing process will be made in writing if a return address or working email has been provided for the response.

Recommendation

Notice: Upon receipt of LDCA, a legal classified notice will be published in *The Orlando Sentinel*.

Public Hearing

Transcript Package: A Transcript Package will be produced and submitted following the public hearing. The Transcript Package will include a verbatim hearing transcript prepared by an approved court reporter, an errata sheet detailing any transcript discrepancies, and copies of all correspondence received by the County as part of the public hearing record.

Public Involvement

Summary: A Public Involvement Summary will be produced and submitted at the conclusion of the study, containing, at a minimum, documentation regarding public participation performed throughout the study period. This summary will include comments and responses received from the public, as well as Advance Notification, coordination with local officials and agencies, and public meetings; the verbatim transcript from the public hearing; proof of publication of ads; sign-in sheets; public hearing certification by the Project Manager; and public comments.

XII. PUBLIC INVOLVEMENT DURING DESIGN

All public involvement materials, including the Comments and Coordination Report and Public Hearing transcript will be provided to the design project manager. This information will provide an overview/summary of the public involvement activities that took place during the PD&E Study. This will help to keep continuity between the PD&E Study and final design phases.

APPENDIX A

Public Involvement Contact Lists

ELECTED OFFICIALS

Title	First Name	Last Name	Title	Organization	Address		City	State		Email	Email
The Honorable	Rick	Scott	Senator	United States Senate	111 N. Adams St. Suite 208		Tallahassee	FL	32301	barry_cotton@rickscott.senate.gov	
The Honorable	Marco	Rubio	Senator	United States Senate	201 South Orange Ave Suite 350		Orlando	FL	32801	scheduling@rubio.senate.gov	casework@rubio.senate.gov
The Honorable	Darren	Soto	Congressman	United States House of Representatives, District 9	804 Bryan Street		Kissimmee	FL	34741	soto@mail.house.gov	
The Honorable	Victor M.	Torres, Jr.	Senator	Florida Senate, District 15	101 Church Street	Suite 305	Kissimmee	FL	34741	Victor.Torres@flsenate.gov	
The Honorable	Kelli	Stargel	Senator	Florida Senate, District 22	2033 East Edgewood Drive	Suite 1	Lakeland	FL	33803	stargel.kelli.web@flsenate.gov	
The Honorable	Josie	Tomkow	Representative, District 39	Florida House of Representatives	315 Pontotoc Street		Auburndale	FL	33823-3444	josie.tomkow@myfloridahouse.gov	
The Honorable	Peggy	Choudhry	Commissioner District 1	Osceola County	1 Courthouse Square	Suite 4700	Kissimmee	FL	34741	Peggy.Choudhry@osceola.org	
	Jessica	Valero	Commissioner's Assistant, District 1	Osceola County	1 Courthouse Square	Suite 4700	Kissimmee	FL	34741	Jessica.Valero@osceola.org	
The Honorable	Viviana	Janer	Chairwoman, Commissioner District 2	Osceola County	1 Courthouse Square	Suite 4700	Kissimmee	FL	34741	Viviana.Janer@osceola.org	
	Brenda	Hernandez	Commissioner's Assistant, District 2	Osceola County	1 Courthouse Square	Suite 4700	Kissimmee	FL	34741	Brenda.Hernandez@osceola.org	
The Honorable	Brandon	Arrington	Chair, Commissioner District 3	Osceola County	1 Courthouse Square	Suite 4700	Kissimmee	FL	34741	Brandon.Arrington@osceola.org	
	Linda	Tolete	Commissioner's Assistant, District 3	Osceola County	1 Courthouse Square	Suite 4700	Kissimmee	FL	34741	lto2@osceola.org	
The Honorable	Cheryl	Grieb	Commissioner District 4	Osceola County	1 Courthouse Square	Suite 4700	Kissimmee	FL	34741	Cheryl.Grieb@osceola.org	
	Ally	Vallecillo	Commissioner's Assistant, District 4	Osceola County	1 Courthouse Square	Suite 4700	Kissimmee	FL	34741	ally.vallecillo@osceola.org	
The Honorable	Ricky	Booth	Commissioner District 5	Osceola County	1 Courthouse Square	Suite 4700	Kissimmee	FL	34741	Ricky.Booth@Osceola.org	
	Nancy	David	Commissioner's Assistant, District 5	Osceola County	1 Courthouse Square	Suite 4700	Kissimmee	FL	34741	ndav@osceola.org	
The Honorable	Kelvin	Soto	Clerk of Court	Osceola County	Osceola County Courthouse	2 Courthouse Square	Kissimmee	FL	34741	ksoto@osceolaclerk.org	
The Honorable	Mary Jane	Arrington	Supervisor of Elections	Osceola County	2509 E. Irlo Bronson Memorial Highway		Kissimmee	FL	34744	soe@voteosceola.com	
The Honorable	Katrina	Scarborough	Property Appraiser	Osceola County	2505 E. Irlo Bronson Memorial Highway		Kissimmee	FL	34744	ksca@property-appraiser.org	
The Honorable	Bruce	Vickers	Tax Collector	Osceola County	2501 E. Irlo Bronson Memorial Highway		Kissimmee	FL	34744	webinfo@osceola.org	
The Honorable	Marco	Lopez	Sheriff	Osceola County	2601 E. Irlo Bronson Memorial Highway		Kissimmee	FL	34744	Mlop@osceola.org	soadmin@osceola.org
The Honorable	Terry	Castillo	School Board Member, District 1	Osceola Schools	817 Bill Beck Boulevard		Kissimmee	FL	34744	Terry.Castillo@osceolaschools.net	
The Honorable	Julius	Melendez	School Board Member District 2	Osceola Schools	817 Bill Beck Boulevard		Kissimmee	FL	34744	Julius.Melendez@osceolaschools.net	
The Honorable	Jon	Arguello	School Board Member District 3	Osceola Schools	817 Bill Beck Boulevard		Kissimmee	FL	34744	Jon.Arguello@osceolaschools.net	
The Honorable	Clarence	Thacker	School Board Member District 4	Osceola Schools	817 Bill Beck Boulevard		Kissimmee	FL	34744	Clarence.Thacker@osceolaschools.net	
The Honorable	Robert	Bass	School Board Member District 5	Osceola Schools	817 Bill Beck Boulevard		Kissimmee	FL	34744	Robert.Bass@osceolaschools.net	
The Honorable	Mark	Greenstein	Chairman, Seat 1	Reunion East Community Development District	7423 Gathering Court		Reunion	FL	34747	gmark10@msn.com	
The Honorable	Steven M.	Goldstein	Assistant Secretary, Seat 2	Reunion East Community Development District	1532 Easton Drive		Reunion	FL	34747	smgcma@gmail.com	
The Honorable	Don	Harding	Vice Chairman, Seat 3	Reunion East Community Development District	1219 Radiant Street		Reunion	FL	34747	donharding4@yahoo.com	
The Honorable	John R.	Dryburgh	Assistant Secretary, Seat 4	Reunion East Community Development District	7412 Gathering Court		Reunion	FL	34747	jdryburgh1951@gmail.com	
The Honorable	Trudy	Hobbs	Assistant Secretary, Seat 5	Reunion East Community Development District	1461 Fairview Circle		Reunion	FL	34747	tfhobbs@gmail.com	
The Honorable	Sharon	Harley	Assistant Secretary, Seat 1	Reunion West Community Development District	8194 Valhalla Terrace		Reunion	FL	34746	sharon@jeevesfloridarentals.com	
The Honorable	Mark	Greenstein	Chairman, Seat 4	Reunion West Community Development District	7423 Gathering Court		Reunion	FL	34747	gmark10@msn.com	
The Honorable	Michael	Mancke	Assistant Secretary, Seat 3	Reunion West Community Development District	9301 W. Fort Island Trail		Crystal River	FL	34429	michael.mancke@plantationoncrystalriver.com	
The Honorable	David	Burman	Vice-Chairman, Seat 5	Reunion West Community Development District	8390 ChampionsGate Blvd.	Suite 304	ChampionsGate	FL	33896	dburman@artemislifestyles.com	
The Honorable	Graham	Staley	Assistant Secretary, Seat 2	Reunion West Community Development District	1113 Grade Traverse Parkway		Reunion	FL	34747	gdstaley@gmail.com	
The Honorable	George	Lindsey	Commissioner, District 1	Polk County	330 W. Church Street, Drawer BC01	P.O. Box 9005	Bartow	FL	33831-9005	georgelindsey@polk-county.net	
The Honorable	Rick	Wilson	Commissioner, District 2, Chairman	Polk County	330 W. Church Street, Drawer BC01	P.O. Box 9005	Bartow	FL	33831-9005	rickwilson@polk-county.net	
The Honorable	Bill	Braswell	Commissioner, District 3	Polk County	330 W. Church Street, Drawer BC01	P.O. Box 9005	Bartow	FL	33831-9005	billbraswell@polk-county.net	
The Honorable	Martha	Santiago	Commissioner, District 4, Vice Chair	Polk County	330 W. Church Street, Drawer BC01	P.O. Box 9005	Bartow	FL	33831-9005	marthasantiago@polk-county.net	
The Honorable	Neil	Combee	Commissioner, District 5	Polk County	330 W. Church Street, Drawer BC01	P.O. Box 9005	Bartow	FL	33831-9005	neilcombee@polk-county.net	
The Honorable	Stacy M.	Butterfield	Clerk of Circuit Court and Comptroller	Polk County	255 N Broadway Avenue		Bartow	FL	33830	stacybutterfield@polk-county.net	
The Honorable	Lori	Edwards	Supervisor of Elections	Polk County	250 S. Broadway Avenue		Bartow	FL	33830	loriedwards@polkelections.com	
The Honorable	Marsha M.	Faux	Property Appraiser	Polk County	255 N Wilson Avenue		Bartow	FL	33830	marshafaux@polk-county.net	
The Honorable	Joe G.	Tedder	Tax Collector	Polk County	430 East Main Street		Bartow	FL	33830	JoeTedder@polktaxes.com	
The Honorable	Grady	Judd	Sheriff	Polk County	1891 Jim Keene Boulevard		Winter Haven	FL	33880	gjudd@polksheriff.org	
The Honorable	William	Allen	School Board Member, District 1	Polk County Public Schools	P.O. Box 391		Bartow	FL	33831	william.allen01@polk-fl.net	
The Honorable	Lori	Cunningham	School Board Member, District 2	Polk County Public Schools	P.O. Box 391		Bartow	FL	33831	lori.cunningham@polk-fl.net	
The Honorable	Sarah	Fortney	School Board Member, District 3	Polk County Public Schools	P.O. Box 391		Bartow	FL	33831	sarah.fortney@polk-fl.net	
The Honorable	Sara Beth	Reynolds	School Board Member, District 4	Polk County Public Schools	P.O. Box 391		Bartow	FL	33831	sarabeth.reynolds@polk-fl.net	
The Honorable	Kay	Fields	School Board Member, District 5	Polk County Public Schools	P.O. Box 391		Bartow	FL	33831	kay.fields@polk-fl.net	
The Honorable	Lynn	Wilson	School Board Member, District 6	Polk County Public Schools	P.O. Box 391		Bartow	FL	33831	lynn.wilson@polk-fl.net	
The Honorable	Lisa	Miller	School Board Member, District 7	Polk County Public Schools	P.O. Box 391		Bartow	FL	33831	lisa.miller@polk-fl.net	

APPOINTED OFFICIALS AND STAFF

Title	First Name	Last Name	Title	Organization	Address	City	State	Zip code	Email
Mr.	Don	Fisher	County Manager	Osceola County	1 Courthouse Square	Kissimmee	FL	34741	don.fisher@osceola.org
Ms.	Iris	Soto	Assistant to the County Manager	Osceola County	1 Courthouse Square	Kissimmee	FL	34741	isot@osceola.org
Ms.	Beth Anne	Knight	Deputy County Manager	Osceola County	1 Courthouse Square	Kissimmee	FL	34741	bkni@osceola.org
Ms.	Sam	Jenkins	Assistant to the Deputy County Manager	Osceola County	1 Courthouse Square	Kissimmee	FL	34741	Samantha.Jenkins@osceola.org
Ms.	Donna	Renberg	Assistant County Manager	Osceola County	1 Courthouse Square	Kissimmee	FL	34741	donna.renberg@osceola.org
Ms.	Miriam	Santiago	Assistant to the Assistant County Manager	Osceola County	1 Courthouse Square	Kissimmee	FL	34741	miriam.santiago@osceola.org
Mr.	Justin	Eason	Planner	Osceola County	1 Courthouse Square	Kissimmee	FL	34741	justin.eason@osceola.org
Ms.	Kathy	Lee	Traffic Engineering	Osceola County	1 Courthouse Square	Kissimmee	FL	34741	kathy.lee@osceola.org
Mr.	Alex	Laffey	Signal Timing Engineer	Osceola County	1 Courthouse Square	Kissimmee	FL	34741	alex.laffey@osceola.org
Ms.	Tawny	Olore, PE	Transportation and Transit Director	Osceola County	1 Courthouse Square	Suite 3100	FL	34741	tawny.olor@osceola.org
Ms.	Marianne	Arneberg	Senior Project Manager	Osceola County	1 Courthouse Square	Kissimmee	FL	34741	marianne.arneberg@osceola.org
Mr.	Chris	Brumbaugh	Communications Manager	Osceola County	1 Courthouse Square	Suite 4400	FL	34741	bccpio@osceola.org
Mr.	Bob	Mindick	Environmental Lands Conservation Program Director	Osceola County	1 Courthouse Square	Suite 1400	FL	34741	conservation@osceola.org
Ms.	Danielle	Slaterpryce	Public Works Director	Osceola County	1 Courthouse Square	Suite 3100	FL	34741	danielle.slaterpryce@osceola.org
Mr.	David	Tomek	Community Development Services Director	Osceola County	1 Courthouse Square	Kissimmee	FL	34741	dtom@osceola.org
Mr.	Bob	Porter	Economic Development Executive Director	Osceola County	1 Courthouse Square	Kissimmee	FL	34741	economicdevelopment@osceola.org
Ms.	Sue	Gosselin	Stormwater Program Manager	Osceola County	1 Courthouse Square	Suite 3100	FL	34741	susan.gosselin@osceola.org
Mr.	William T.	Litton	Emergency Management Director	Osceola County	2586 Partin Settlement Road	Kissimmee	FL	34744	Bill.Litton@osceola.org
Chief	Larry	Collier	Fire Rescue	Osceola County	2586 Partin Settlement Road	Kissimmee	FL	34744	osceolfirerescue@Osceola.org
Dr.	Debra	Pace	Superintendent	Osceola County Schools	817 Bill Beck Boulevard	Kissimmee	FL	34744	debra.pace@osceolaschools.net
Ms.	Rhonda	Blake	Director of Planning Services	Osceola County Schools	817 Bill Beck Boulevard	Kissimmee	FL	34744	rhonda.blake@osceolaschools.net
Mr.	Bill	Beasley	County Manager	Polk County	330 W. Church St	Drawer BC01, P.O. Box 9005	FL	33831-9005	BillBeasley@polk-county.net
Mr.	Ryan	Taylor	Deputy County Manager	Polk County	330 W. Church St	Drawer BC01, P.O. Box 9005	FL	33831-9005	RyanTaylor@polk-county.net
Ms.	Lea Ann	Thomas	Deputy County Manager	Polk County	330 W. Church St	Drawer BC01, P.O. Box 9005	FL	33831-9005	leaanthomas@polk-county.net
Mr.	Joe	Halman, Jr.	Deputy County Manager	Polk County	330 W. Church St	Drawer BC01, P.O. Box 9005	FL	33831-9005	JoeHalman@polk-county.net
Mr.	Todd	Bond	Deputy County Manager	Polk County	330 W. Church St	Drawer BC01, P.O. Box 9005	FL	33831-9005	ToddBond@polk-county.net
Ms.	Chandra	Frederick	Assistant County Manager	Polk County	330 W. Church St	Drawer BC01, P.O. Box 9005	FL	33831-9005	ChandraFrederick@polk-county.net
Ms.	Mianne	Nelson	Communications Director	Polk County	330 W. Church St	Drawer BC01, P.O. Box 9005	FL	33831-9005	MianneNelson@polk-county.net
Mr.	Paul	Womble	Emergency Management Director	Polk County	330 W. Church St	Drawer BC01, P.O. Box 9005	FL	33831-9005	PaulWomble@polk-county.net
Mr.	Robert	Weech	Fire Rescue Director	Polk County	330 W. Church St	Drawer BC01, P.O. Box 9005	FL	33831-9005	PaulWomble@polk-county.net
Mr.	John	Bohde	Land Development Director	Polk County	330 W. Church St	Drawer BC01, P.O. Box 9005	FL	33831-9005	JohnBohde@polk-county.net
Mr.	Ronnie	Blackshear	Long Range Planning Director	Polk County	330 W. Church St	Drawer BC01, P.O. Box 9005	FL	33831-9005	RonnieBlackshear@polk-county.net
Ms.	Gaye	Sharpe	Parks and Natural Resources Director	Polk County	330 W. Church St	Drawer BC01, P.O. Box 9005	FL	33831-9005	GayeSharpe@polk-county.net
Mr.	Jay	Jarvis	Roads and Drainage Director	Polk County	330 W. Church St	Drawer BC01, P.O. Box 9005	FL	33831-9005	JayJarvis@polk-county.net
Ms.	Tamara	Richardson	Utilities Director	Polk County	330 W. Church St	Drawer BC01, P.O. Box 9005	FL	33831-9005	TamaraRichardson@polk-county.net
Ms.	Jacqueline M.	Byrd	Superintendent	Polk County Public Schools	1915 South Floral Avenue	Bartow	FL	33831	jacqueline.byrd@polk-fl.net
Ms.	Jill	Seymour	Director of Transportation, Safe Schools, and Vehicle Safety	Polk County Public Schools	1915 South Floral Avenue	Bartow	FL	33831	jill.seymour@polk-fl.net

AGENCY CONTACTS

Title	First Name	Last Name	Position	Organization	Address 1	Address 2	City	State	Zip code	Email
Ms.	Laura	Kelley	Executive Director	Central Florida Expressway Authority	4974 ORL Tower Road		Orlando	FL	32807	Laura.Kelley@CFXway.com
Mr.	Will	Hawthorne	Director of Engineering	Central Florida Expressway Authority	4974 ORL Tower Road		Orlando	FL	32807	Will.Hawthorne@cfxway.com
Ms.	Dana	Chester	Manager of Engineering	Central Florida Expressway Authority	4974 ORL Tower Road		Orlando	FL	32807	Dana.Chester@cfxway.com
Mr.	Glenn	Pressimone	Chief of Infrastructure	Central Florida Expressway Authority	4974 ORL Tower Road		Orlando	FL	32807	Glenn.Pressimone@CFXway.com
Mr.	Hugh	Harling, PE	Executive Director	East Central Florida Regional Planning Council	455 North Garland Avenue		Orlando	FL	32801	hharling@ecfrpc.org
Ms.	Tara	McCue, AICP	Director of Planning & Community Development	East Central Florida Regional Planning Council	455 North Garland Avenue		Orlando	FL	32801	tara@ecfrpc.org
Ms.	Karen	Snyder	Project Development Manager	FDOT District Five	719 S. Woodland Blvd.		DeLand	FL	32720	karen.snyder@dot.state.fl.us
Ms.	Lorena	Cucek	FDOT Liaison	FDOT District Five	719 S. Woodland Blvd.		DeLand	FL	32720	lorena.cucek@dot.state.fl.us
Mr.	William	Walsh	Environmental Manager	FDOT District Five	719 S. Woodland Blvd.		DeLand	FL	32720	william.walsh@dot.state.fl.us
Ms.	Su	Hao	Project Management Engineer	FDOT District Five	719 S. Woodland Blvd.		DeLand	FL	32720	su.hao@dot.state.fl.us
Mr.	Henry	Pinzon	Environmental Management Engineer	Florida's Turnpike	P.O. Box 613069		Ocoee	FL	34761	henry.pinzon@dot.state.fl.us
Mr.	Rax	Jung	Project Development Engineer	Florida's Turnpike	P.O. Box 613069		Ocoee	FL	34761	rax.jung@dot.state.fl.us
Mr.	Philip	Stein	Environmental Manager	Florida's Turnpike	P.O. Box 613069		Ocoee	FL	34761	philip.stein@dot.state.fl.us
Ms.	Nicola	Liquori	Executive Director and CEO	Florida's Turnpike	P.O. Box 613069		Ocoee	FL	34761	Nicola.Liquori@dot.state.fl.us
Ms.	Christina	Colon	Director of Transportation Development	Florida's Turnpike	P.O. Box 613069		Ocoee	FL	34761	Christina.Colon@dot.state.fl.us
Mr.	James E.	Harrison	Chief Executive Officer	Lynx	455 N. Garland Ave.		Orlando	FL	32801	jharrison@golynx.com
Mr.	Gary	Huttman, AICP	Executive Director	MetroPlan Orlando	250 S. Orange Avenue	Suite 200	Orlando	FL	32801	ghuttman@metroplanorlando.org
Mr.	Nick	Lepp, AICP	Director of Transportation Planning	MetroPlan Orlando	250 S. Orange Avenue	Suite 200	Orlando	FL	32801	nlepp@metroplanorlando.org
Ms.	Virginia L.	Whittington	Director of Regional Partnerships	MetroPlan Orlando	250 S. Orange Avenue	Suite 200	Orlando	FL	32801	vlwhittington@metroplanorlando.org
Ms.	Cathy	Goldfarb	Senior Board Services Coordinator	MetroPlan Orlando	250 S. Orange Avenue	Suite 200	Orlando	FL	32801	cgoldfarb@metroplanorlando.org
Mr.	Keith	Caskey, AICP	Manager of Planning Services	MetroPlan Orlando	250 S. Orange Avenue	Suite 200	Orlando	FL	32801	kcaskey@metroplanorlando.org
Ms.	Chandra	Frederick	Executive Director	Polk TPO	330 W Church Street	Drawer TS05	Bartow	FL	33830	ChandraFrederick@polk-county.net
Mr.	Ryan	Kordek	Transportation Planning Administrator	Polk TPO	330 W Church Street	Drawer TS05	Bartow	FL	33830	RyanKordek@polk-county.net
Ms.	Julia	Davis	Senior Transportation Planner - Safety	Polk TPO	330 W Church Street	Drawer TS05	Bartow	FL	33830	JuliaDavis@polk-county.net
Mr.	Lorenzo	Thomas	Senior Transportation Planner	Polk TPO	330 W Church Street	Drawer TS05	Bartow	FL	33830	LorenzoThomas@polk-county.net
Ms.	Lori	Belangia	Senior Transportation Planner	Polk TPO	330 W Church Street	Drawer TS05	Bartow	FL	33830	LoriBelangia@polk-county.net
Mr.	John	Classe	District Administrator	Reedy Creek Improvement District	1900 Hotel Plaza Blvd.		Lake Buena Vista	FL	32830	jclasse@rcid.org
Ms.	Ann	Blakeslee	Deputy District Administrator	Reedy Creek Improvement District	1900 Hotel Plaza Blvd.		Lake Buena Vista	FL	32830	ablakeslee@rcid.org

ENVIRONMENTAL/NON-GOVERNMENT ORGANIZATIONS

Title	First Name	Last Name	Position	Organization	Address 1	Address 2	City	State	Zip code	Email
Mr.	Paul	Owens	President	1000 Friends of Florida	308 North Monroe Street		Tallahassee	FL	32301	powens@1000fof.org
Mrs.	Marjorie	Holt	Chair	Central Florida Sierra Club	P.O. Box 941692		Maitland	FL	32794	marjorieholt@earthlink.net
Mrs.	Temperince	Morgan	Executive Director	The Nature Conservancy	2500 Maitland Center Parkway	Suite 311	Maitland	FL	32751	tmorgan@tnc.org
Mrs.	Stephanie	Gaspar	President	Kissimmee Valley Audubon Society	P.O. Box 420115		Kissimmee	FL	34742	sgaspar@knights.ucf.edu

ETAT MEMBERS

Title	First Name	Last Name	Position	Organization	Address 1	Address 2	City	State	Zip code	Email
Dr.	Adrienne	Daggett	Archaeologist	FL Department of State	500 S Bronough Street	4th Floor	Tallahassee	FL	32399	Adrienne.Daggett@dos.myflorida.com
Ms.	Alison	Swing	Senior Maintenance Specialist	Seminole Tribe of Florida	30290 Josie Billie Highway	PMB 1004	Clewiston	FL	33440	alisonswing@semtribe.com
Ms.	Alyssa	McManus	Historian/Historic Preservation Planner	FL Department of State	500. S. Bronough Street	R.A. Gray Building	Tallahassee	FL	32306	alyssa.mcmanus@dos.myflorida.com
Mr.	Andrew	Kizlauskas	Chief, Panama City Permits Section, FDOT Team	US Army Corps of Engineers	415 Richard Jackson Blvd.	STE 411	Panama City Beach	FL	32407	andrew.a.kizlauskas@usace.army.mil
Ms.	Anita	Barnett	Environmental Protection Specialist	National Parks Service	100 Alabama Street	1924 Building	Atlanta	GA	30303	anita_barnett@nps.gov
Ms.	Annette	Burkett	Engineering Specialist	South Florida Water Management	1707 Orlando Central Parkway		Orlando	FL	32809	aburkett@sfwmd.gov
Mr.	Bradley	Mueller	Compliance Review Supervisor	Seminole Tribe of Florida	30290 Josie Billie Highway	PMB 1004	Clewiston	FL	33440	Bradleymueller@semtribe.com
Mr.	Brian	Camposano	State Forest Ecologist	FL Department of Agriculture and Consumer Services	3125 Conner Boulevard		Tallahassee	FL	32399-1650	Brian.Camposano@FreshFromFlorida.com
Ms.	Brittany	Bianco	Project Delivery Coordinator	FDOT Office of Environmental Management	605 Suwannee St.		Tallahassee	FL	32399	Brittany.Bianco@dot.state.fl.us
Mr.	Chris	Stahl	Clearinghouse Coordinator	FL Department of Environmental Protection	3900 Commonwealth Blvd, Mail Station 47		Tallahassee	FL	32399	Chris.Stahl@FloridaDEP.gov
Ms.	Cynthia	Ovdenk	Project Manager	US Army Corps of Engineers	408 R Jackson Blvd, ste. 411		Panama City Beach	FL	32407	Cynthia.D.Ovdenk@usace.army.mil
Mr.	David	Echeverry	Compliance Reviewer	Seminole Tribe of Florida	30290 Josie Billie Highway	PMB 1004	Clewiston	FL	33440	davidecheverry@semtribe.com
Ms.	Denise	Rach	Project Delivery Coordinator	FDOT Office of Environmental Management	605 Suwannee Street		Tallahassee	FL	32399	denise.rach@dot.state.fl.us
Ms.	Erika	Davis	Forest Engineer	US Forest Service	325 John Knox Dr. Ste F-100		Tallahassee	FL	32303	erikadavis@fs.fed.us
Mr.	Jason	Aldridge	Compliance Review Supervisor	FL Department of State	500 S Bronough Street		Tallahassee	FL	32308	Jason.Aldridge@dos.myflorida.com
Mr.	Jason	Hight	Program Administrator	FL Fish and Wildlife Conservation Commission	620 South Meridian St	MS5B5	Tallahassee	FL	32399	Jason.Hight@MyFWC.com
Ms.	Jennifer	Goff	Director, Conservation Planning Services	FL Fish and Wildlife Conservation Commission	620 S. Meridian St		Tallahassee	FL	32399	jennifer.goff@MyFWC.com
Ms.	Jennifer	Schull	Fish Biologist	National Marine Fisheries Service	400 N. Congress Avenue	Suite 270	West Palm Beach	FL	33401	jennifer.schull@noaa.gov
Ms.	Jennifer	Zercher	Bridge Management Specialist	US Coast Guard	909 S.E. 1st Ave		Miami	FL	33131	jennifer.n.zercher@uscg.mil
Mr.	John	Wrublik	Fish & Wildlife Biologist	US Fish and Wildlife Service	1339 20th Street		Vero Beach	FL	32960	john_wrublik@fws.gov
Mr.	Ntale	Kajumba	NEPA Practitioner	US Environmental Protection Agency	61 Forsyth Street, S.W.		Atlanta	GA	30303	Kajumba.Ntale@epamail.epa.gov
Ms.	Katasha	Cornwell	State Environmental Process Administrator	FDOT Office of Environmental Management	605 Suwannee Street, MS-37		Tallahassee	FL	32399	katasha.cornwell@dot.state.fl.us
Mr.	Leroy	Crockett	Soils Scientist	Natural Resources Conservation Service	Perry Paige Bld Suite 305N	1740 S MLK Blvd	Tallahassee	FL	32307	Leroy.Crockett@fl.usda.gov
Ms.	Lindsay	Rothrock	Historic Preservationist/Archaeologist	FL Department of State	500 South Bronough Street		Tallahassee	FL	32399	lindsay.rothrock@dos.myflorida.com
Mr.	Mark	Kiser	State Forest Ecologist	FL Department of Agriculture and Consumer Services	3125 Conner Blvd.		Tallahassee	FL	32399	Mark.Kiser@FDACS.gov
Mr.	Mark	Cantrell	Fish & Wildlife Biologist	US Fish and Wildlife Service	1601 Balboa Ave		Panama City	FL	32405	mark_a_cantrell@fws.gov
Mr.	Mark M.	Tamblyn	Biologist	US Army Corp of Engineers	4400 PGA Boulevard	Suite 500	Palm Beach Gardens		33410	Mark.M.Tamblyn@usace.army.mil
Mr.	Marty	Bridges	Bridge Program Manager	US Coast Guard	909 S.E. 1st Ave		Miami	FL	33131	Martin.A.Bridges@uscg.mil
Mr.	Matt	Preston	Planning Analyst	FL Department of Economic Opportunity	107 East Madison Street	Caldwell Bldg. MSC 160	Tallahassee	FL	32399	matt.preston@deo.myflorida.com
Mr.	Michael	Pennington	Engineer	FDOT Office of Environmental Management	1317 Lehigh Dr		Tallahassee	FL	32301	mike.pennington@dot.state.fl.us
Mr.	Paul	Backhouse	HERO Senior Director	Seminole Tribe of Florida	30290 Josie Billie Highway	PMB 1004	Clewiston	FL	33440	paulbackhouse@semtribe.com
Mr.	Peter	McGilvray	Project Screening and Technologies Administrator	FDOT Office of Environmental Management	605 Suwannee Street		Tallahassee	FL	32399	peter.mcgilvray@dot.state.fl.us
Mr.	Randall	Overton	Bridge Management Specialist	US Coast Guard	909 S.E. 1st Ave	Suite 432	Miami	FL	33131	randall.d.overton@uscg.mil
LTC (USA Retired)	Randy	Turner	Project Manager	US Army Corps of Engineers	P.O. Box 4970		Jacksonville	FL	32232-0019	Randy.L.Turner@usace.army.mil
Ms.	Alya	Singh-White	Biologist / Life Scientist	US Environmental Protection Agency	61 Forsyth St. SW		Atlanta	GA	30303	Singh-White.Alya@epa.gov
Ms.	Amanetta	Somerville	Environmental Scientist	US Environmental Protection Agency	61 Forsyth Street SW.		Atlanta	GA	30303	somerville.amanetta@epa.gov
Ms.	Trisha	Stone	Lead Environmental Analyst	South Florida Water Management	3301 Gun Club Road		West Palm Beach	FL	33406	tstone@sfwmd.gov
Mrs.	Veronica	Beech	ETAT Member	US Army Corps of Engineers	P.O. Box 4970		Jacksonville	FL	32232-0019	Veronica.C.Beech@usace.army.mil
Mr.	Vincent	Morris	ETAT Member	FL Department of Agriculture and Consumer Services	15019 Broad Street		Brooksville	FL	34601	vincent.morris@freshfromflorida.com
Ms.	Roshanna	White	Life Scientist	US Environmental Protection Agency	61 Forsyth Street Southwest		Atlanta	GA	30303	White.Roshanna@epa.gov

NATIVE AMERICAN COORDINATION

Title	First Name	Last Name	Position	Organization	Address		City	State	Zip code	Email
Mr.	Jason	Watts	Director	FDOT Native American Coordinator	605 Suwannee Street		Tallahassee	FL	32299	jason.watts@dot.state.fl.us
Mr.	Kevin	Donaldson	Section 106 and NAGPRA Coordinator	Miccosukee Tribe of Indians of Florida	SR Box 68 Old Loop Road		Ochopee	FL	34141	kevind@miccosukeetribe.com
Ms.	Stephanie A.	Bryan	Tribal Chair	Poarch Band of Creek Indians of Alabama	5811 Jack Springs Road		Atmore	AL	36502	
Mr.	Larry D.	Haikey	PBCI Tribal Historic Preservation Officer	Poarch Band of Creek Indians of Alabama	5811 Jack Springs Road		Atmore	AL	36502	lhaikey@pci-nsn.gov
Mr.	Gregory	Chilcoat	Principal Chief	Seminole Nation of Oklahoma	P.O Box 1498		Wewoka	OK	74884	
Ms.	Brigita	Leader	Tribal Historic Preservation Office	Seminole Nation of Oklahoma	P.O Box 1498		Wewoka	OK	74884	leader.bs@sno-nsn.gov
Mr.	Marcellus	Osceola	Chairman	Seminole Tribe of Florida	6300 Stirling Road		Hollywood	FL	33024	
Ph.D.	Paul	Backhouse	Senior Director	Seminole Tribe of Florida	Heritage and Environmental Office	30290 Josie Billie Hwy, PMB 1004	Clewiston	FL	33440	
Ms.	Anne	Mullins	Director	Seminole Tribe of Florida	Heritage and Environmental Office	30290 Josie Billie Hwy, PMB 1004	Clewiston	FL	33440	victoriamenchaca@semtribe.com
Mr.	Bradley	Mueller	Compliance Review Supervisor	Seminole Tribe of Florida	30290 Josie Billie Hwy, PMB 1004		Clewiston	FL	33440	THPOCompliance@semtribe.com

STAKEHOLDERS											
Title	First Name	Last Name	Position	Organization	Address 1	Address 2	City	State	Zip code	Email	
Mr.	Richard	Nasser	President of Resort Division	Kingwood International Resorts	7593 Gathering Drive		Kissimmee	FL	34747	richard@kingwoodresort.com	
Ms.	Debbie	Mafra	Portfolio Director, Reunion Resort	Artemis Lifestyles	1631 E. Vine Street	Suite 300	Kissimmee	FL	34744	dmafra@artemislifestyles.com	
Mr.	George	Flint	District Manager	Governmental Management Services – Central Florida, LLC	219 E Livingston St.		Orlando	FL	32801	gflint@gmscfl.com	
Mr.	Anthony	Carl	General Manager	Reunion Resort	7593 Gathering Drive		Kissimmee	FL	34747	acarll@reunionresort.com	
Ms.	Alice	Paracha	Registered Agent	Indian Ridge Homeowners Association	910 Amy Ridge Court		Kissimmee	FL	34747	indianridge2@indianridgehoa.com	
Mr.	Zach	Johnson	General Manager	Encore and the Sentosa Apartments	7635 Fairfax Dr		Reunion	FL	34747	zacj@falconegroup.info	
Mr.	George S.	Flint	District Manager	Reunion East and West Community Development Districts	Central Florida, LLC	135 W. Central Blvd. Suite 320	Orlando	FL	32801	gflint@gmscfl.com	

APPENDIX B

Sociocultural Data Report

Sociocultural Data Report

Area: 3.285 square miles
Jurisdiction(s): **Cities:** NA
Counties: Polk, Osceola

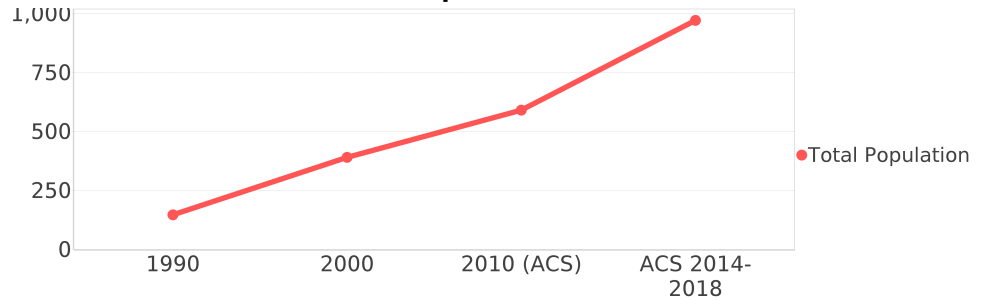
General Population Trends

Description	1990	2000	2010 (ACS)	ACS 2014-2018
Total Population	147	391	591	972
Total Households	46	144	218	306
Average Persons per Acre	0.12	0.36	0.89	1.56
Average Persons per Household	3.05	2.73	3.00	3.19
Average Persons per Family	3.04	3.17	3.00	3.51
Males	76	192	294	478
Females	71	198	296	494

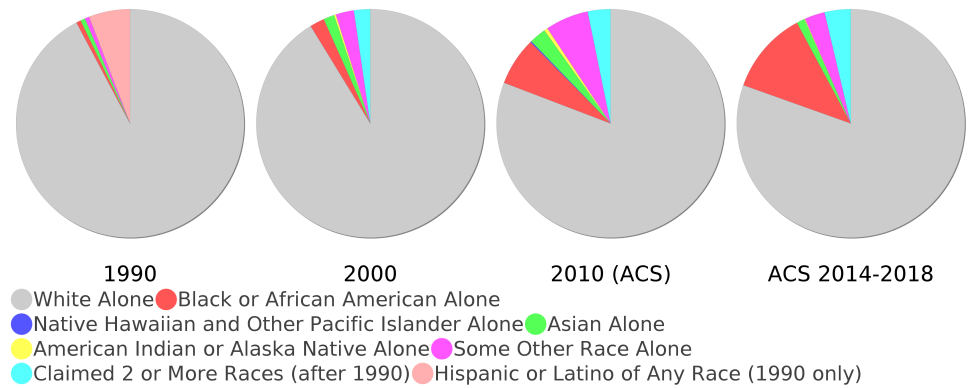
Race and Ethnicity Trends

Description	1990	2000	2010 (ACS)	ACS 2014-2018
White Alone	142 (96.60%)	354 (90.54%)	475 (80.37%)	781 (80.35%)
Black or African American Alone	1 (0.68%)	8 (2.05%)	40 (6.77%)	114 (11.73%)
Native Hawaiian and Other Pacific Islander Alone	0 (0.00%)	0 (0.00%)	1 (0.17%)	0 (0.00%)
Asian Alone	1 (0.68%)	6 (1.53%)	14 (2.37%)	11 (1.13%)
American Indian or Alaska Native Alone	0 (0.00%)	1 (0.26%)	3 (0.51%)	1 (0.10%)
Some Other Race Alone	1 (0.68%)	10 (2.56%)	36 (6.09%)	28 (2.88%)
Claimed 2 or More Races	NA (NA)	9 (2.30%)	19 (3.21%)	36 (3.70%)
Hispanic or Latino of Any Race	9 (6.12%)	41 (10.49%)	146 (24.70%)	250 (25.72%)
Not Hispanic or Latino	138 (93.88%)	350 (89.51%)	445 (75.30%)	722 (74.28%)
Minority	13 (8.84%)	64 (16.37%)	209 (35.36%)	396 (40.74%)

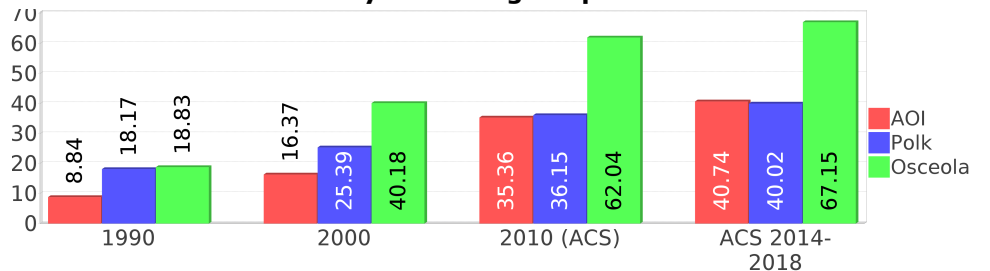
Population



Race



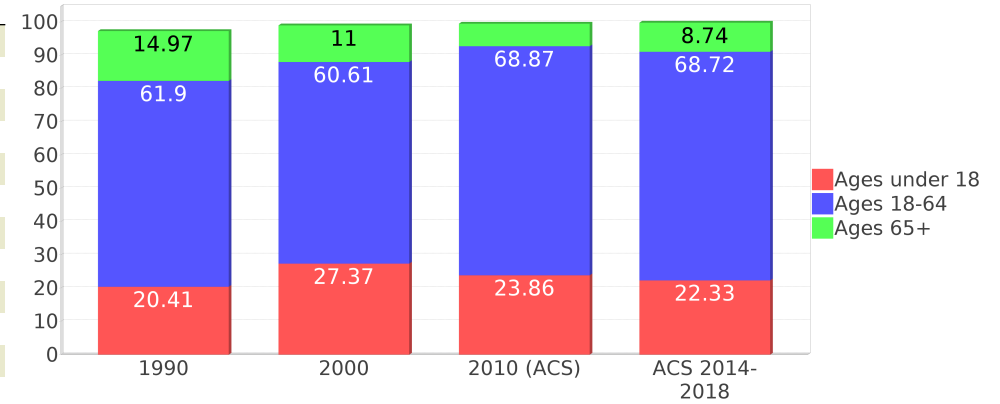
Minority Percentage Population



Age Trends

Description	1990	2000	2010 (ACS)	ACS 2014-2018
Under Age 5	5.44%	6.14%	6.43%	4.73%
Ages 5-17	14.97%	21.23%	17.43%	17.59%
Ages 18-21	4.08%	3.07%	5.25%	5.14%
Ages 22-29	12.24%	7.67%	13.03%	19.65%
Ages 30-39	15.65%	15.35%	15.57%	12.24%
Ages 40-49	12.93%	16.11%	16.92%	16.26%
Ages 50-64	17.01%	18.41%	18.10%	15.43%
Age 65 and Over	14.97%	11.00%	6.77%	8.74%
-Ages 65-74	11.56%	7.93%	4.74%	5.35%
-Ages 75-84	3.40%	2.81%	1.52%	2.88%
-Age 85 and Over	0.00%	0.00%	0.17%	0.51%
Median Age	NA	37	35	34

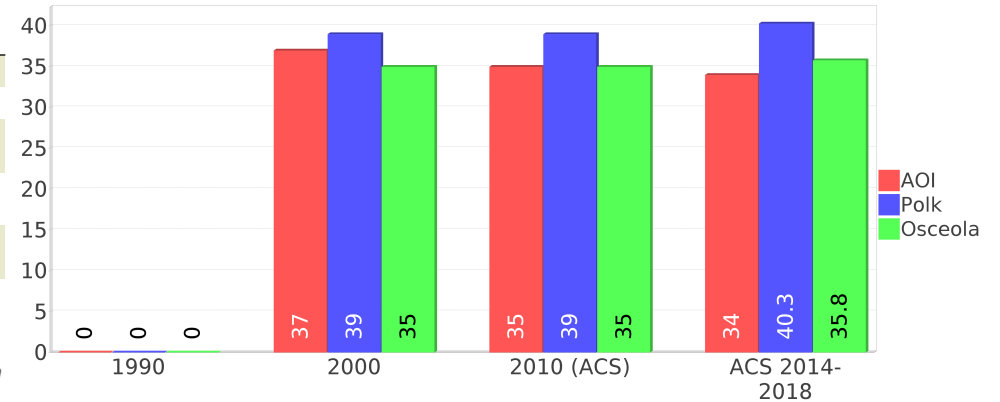
Percentage Population by Age Group



Income Trends

Description	1990	2000	2010 (ACS)	ACS 2014-2018
Median Household Income	\$30,859	\$55,053	\$58,564	\$59,688
Median Family Income	\$34,924	\$55,638	\$65,484	\$52,500
Population below Poverty Level	10.20%	6.65%	4.91%	15.23%
Households below Poverty Level	10.87%	4.86%	4.13%	11.11%
Households with Public Assistance Income	2.17%	0.00%	0.00%	1.63%

Median Age Comparison



Disability Trends

See the Data Sources section below for an explanation about the differences in disability data among the various years.

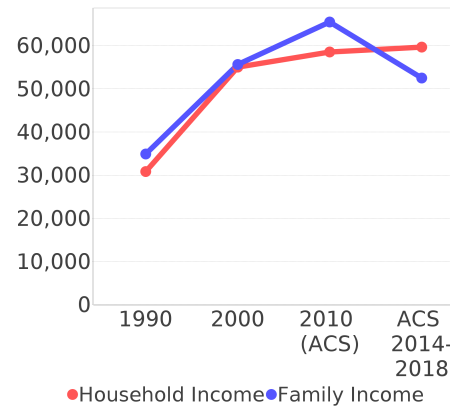
Description	1990	2000	2010 (ACS)	ACS 2014-2018
Population 16 To 64 Years with a disability	15 (12.71%)	55 (15.15%)	(NA)	(NA)
Population 20 To 64 Years with a disability	(NA)	(NA)	(NA)	56 (8.62%)

Educational Attainment Trends

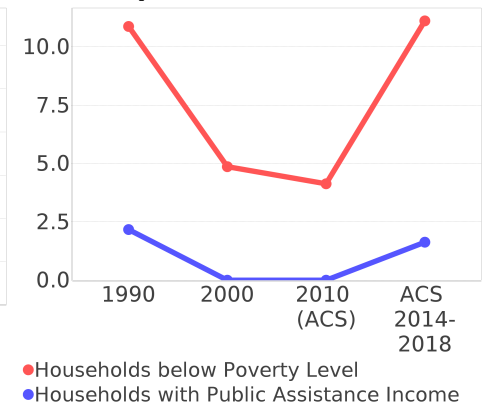
Age 25 and Over

Description	1990	2000	2010 (ACS)	ACS 2014-2018
Less than 9th Grade	7 (7.07%)	7 (2.68%)	11 (3.62%)	16 (2.52%)
9th to 12th Grade, No Diploma	14 (14.14%)	29 (11.11%)	8 (2.63%)	28 (4.42%)
High School Graduate or Higher	77 (77.78%)	224 (85.82%)	285 (93.75%)	589 (92.90%)
Bachelor's Degree or Higher	20 (20.20%)	87 (33.33%)	76 (25.00%)	190 (29.97%)

Income Trends



Poverty and Public Assistance



Language Trends

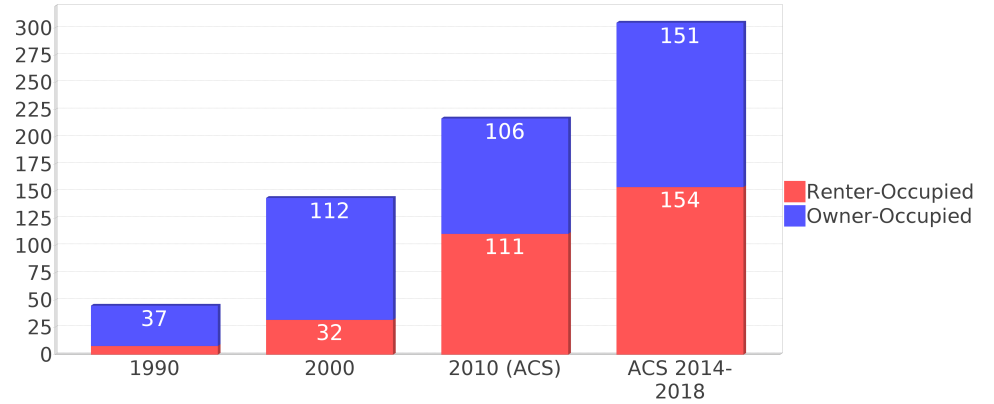
Age 5 and Over

Description	1990	2000	2010 (ACS)	ACS 2014-2018
Speaks English Well	4 (2.76%)	11 (3.01%)	24 (5.80%)	33 (3.56%)
Speaks English Not Well	NA (NA)	3 (0.82%)	20 (4.83%)	29 (3.13%)
Speaks English Not at All	NA (NA)	3 (0.82%)	0 (0.00%)	21 (2.27%)
Speaks English Not Well or Not at All	2 (1.38%)	6 (1.64%)	20 (4.83%)	50 (5.40%)
Speaks English Less than Very Well	NA (NA)	18 (4.92%)	45 (10.87%)	83 (8.96%)

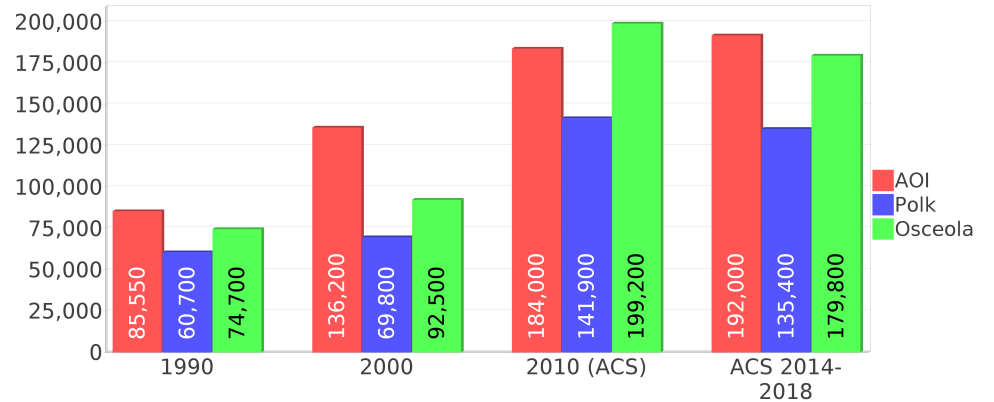
Housing Trends

Description	1990	2000	2010 (ACS)	ACS 2014-2018
Total	144	239	976	1,025
Units per Acre	0.08	0.19	0.70	0.74
Single-Family Units	27	172	373	450
Multi-Family Units	0	21	189	522
Mobile Home Units	17	34	39	48
Owner-Occupied Units	37	112	106	151
Renter-Occupied Units	8	32	111	154
Vacant Units	98	94	758	719
Median Housing Value	\$85,550	\$136,200	\$184,000	\$192,000
Occupied Housing Units w/No Vehicle	2 (4.35%)	1 (0.69%)	2 (0.92%)	6 (1.96%)
Median year householder moved into unit - Total	NA	NA	NA	2012
Median year householder moved into unit - Owner Occupied	NA	NA	NA	2011
Median year householder moved into unit - Renter Occupied	NA	NA	NA	2014
Abroad 1 year ago	NA	NA	NA	55
Different house in United States 1 year ago	NA	NA	NA	211
Same house 1 year ago	NA	NA	NA	697
Geographical Mobility in the Past Year - Total	NA	NA	NA	963

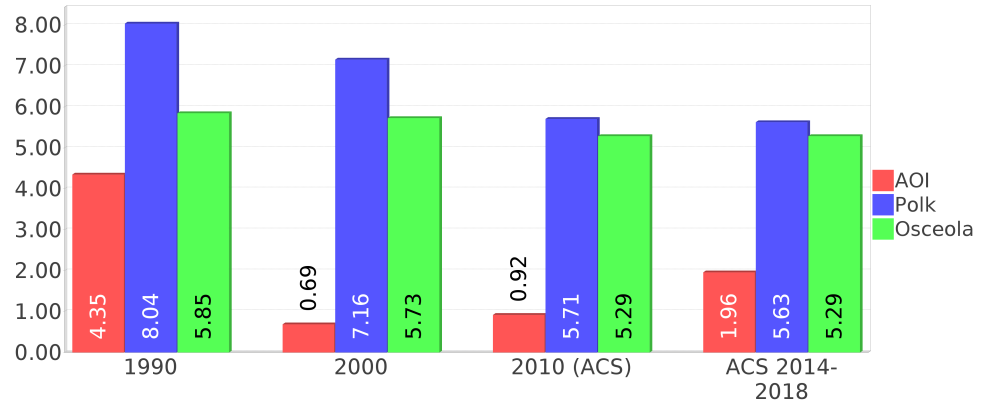
Housing Tenure



Median Housing Value Comparison

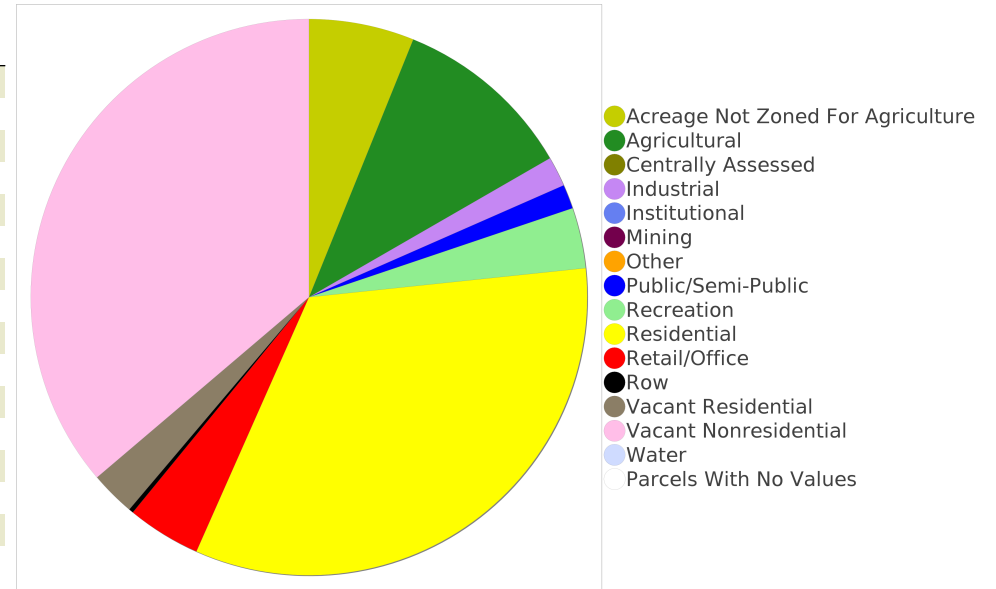


Occupied Units With No Vehicles Available

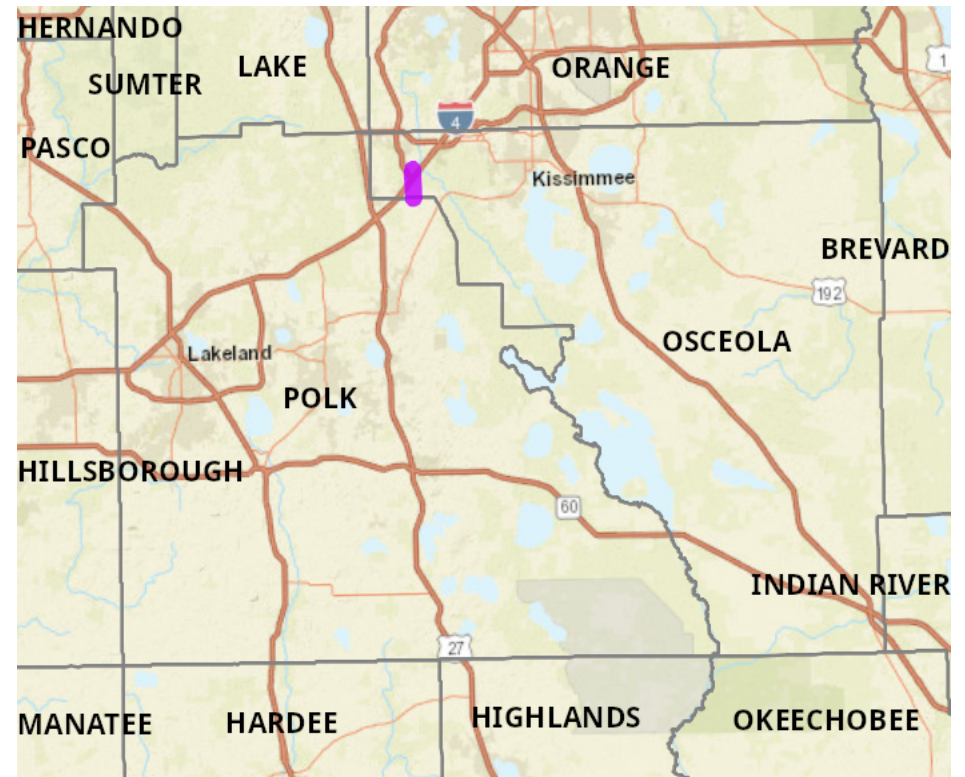
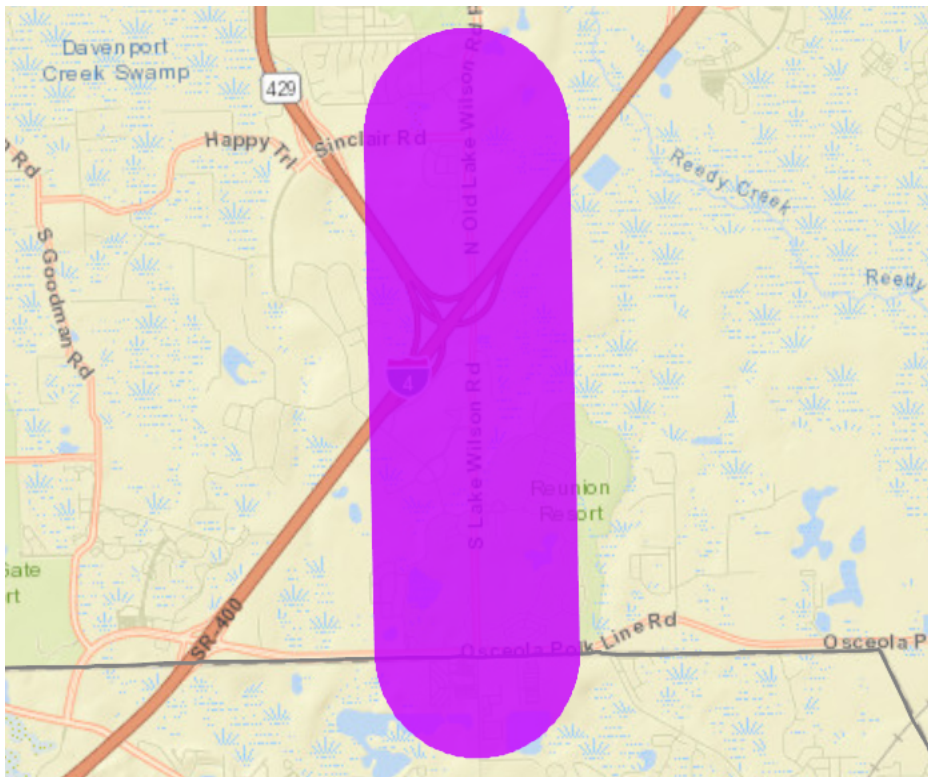


Existing Land Use

Land Use Type	Acres	Percentage
Acreage Not Zoned For Agriculture	113	5.37%
Agricultural	195	9.28%
Centrally Assessed	0	0.00%
Industrial	32	1.52%
Institutional	0	0.00%
Mining	0	0.00%
Other	0	0.00%
Public/Semi-Public	26	1.24%
Recreation	65	3.09%
Residential	615	29.25%
Retail/Office	79	3.76%
Row	5	0.24%
Vacant Residential	48	2.28%
Vacant Nonresidential	669	31.82%
Water	0	0.00%
Parcels With No Values	<0.5	<0.02%



Location Maps



Community Facilities

The community facilities information below is useful in a variety of ways for environmental evaluations. These community resources should be evaluated for potential sociocultural effects, such as accessibility and relocation potential. The facility types may indicate the types of population groups present in the project study area. Facility staff and leaders can be sources of community information such as who uses the facility and how it is used. Additionally, community facilities are potential public meeting venues.

Mobile Home Parks

Facility Name	Address	Zip Code
MOUSE MOUNTAIN MOBILE HOME PARK	7500 OSCEOLA POLK LINE RD	33837

Block Groups

The following Census Block Groups were used to calculate demographics for this report.

1990 Census Block Groups

121050125001, 120970401013

2000 Census Block Groups

120970408003, 120970408004, 121050125011

2010 Census Block Groups

121050125061, 120970408021, 121050125063, 120970408011

Census Block Groups

121050125061, 121050125063, 120970408021, 120970408011

Data Sources

Area

The geographic area of the community based on a user-specified community boundary or area of interest (AOI) boundary.

Jurisdiction

Jurisdiction(s) includes local government boundaries that intersect the community or AOI boundary.

Demographic Data

Demographic data reported under the headings General Population Trends, Race and Ethnicity Trends, Age Trends, Income Trends, Educational Attainment Trends, Language Trends, and Housing Trends is from the U.S. Decennial Census (1990, 2000) and the American Community Survey (ACS) 5-year estimates from 2006-2010 and ACS 2014-2018. The data was gathered at the block group level for user-specified community boundaries and AOIs, and at the county level for counties. Depending on the dataset, the data represents 100% counts (Census Summary File 1) or sample-based information (Census Summary File 3 or ACS).

About the Census Data:

User-specified community boundaries and AOIs do not always correspond precisely to block group boundaries. In these instances, adjustment of the geographic area and data for affected block groups is required to estimate the actual population. To improve the accuracy of such estimates in the SDR report, the census block group data was adjusted to exclude all census blocks with a population of two or fewer. These areas were eliminated from the corresponding years' block groups. Next, the portion of the block group that lies outside of the community or AOI boundary was removed. The demographics within each block group were then recalculated, assuming an equal area distribution of the population. Note that there may be areas where there is no population.

Use caution when comparing the 100% count data (Decennial Census) to the sample-based data (ACS). In any given year, about one in 40 or 2.5% of U.S. households will receive the ACS questionnaire. Over any five-year period, about one in eight households will receive the questionnaire, as compared to about one in six that received the long form questionnaire for the Decennial Census 2000. (Source: <http://mcdc.missouri.edu/pub/data/acs/Readme.shtml>) The U.S. Census Bureau provides help with this process:

[https://www.census.gov/programs-surveys/acs/guidance/comparing-acs-data/ACS 2014-2018.html](https://www.census.gov/programs-surveys/acs/guidance/comparing-acs-data/ACS%2014-2018.html)

Use caution when interpreting changes in Race and Ethnicity over time. Starting with the 2000 Decennial Census, respondents were given a new option of selecting one or more race categories. Also in 2000, the placement of the question about Hispanic origin changed, helping to increase responsiveness to the Hispanic-origin question. Because of these and other changes, the 1990 data on race and ethnicity are not directly comparable with data from later censuses. (Source: <http://www.census.gov/prod/2001pubs/c2kbr01-1.pdf>; <http://www.census.gov/pred/www/rpts/Race%20and%20Ethnicity%20FINAL%20report.pdf>)

The "Minority" calculations are derived from Census and ACS data using both the race and ethnicity responses. On this report, "Minority" refers to individuals who list a race other than White and/or list their ethnicity as Hispanic/Latino. In other words, people who are multi-racial, any single race other than White, or Hispanic/Latino of any race are considered minorities.

Disability data is not included in the 2010 Decennial Census, or the 2006-2010 ACS. This data is available in the ACS 2014-2018 ACS.

Because of changes made to the Census and ACS questions between 1990 and ACS 2014-2018, disability variables should not be compared from year to year. For example: 1) With the 1990 data the disabilities are listed as a "work disability" while this distinction is not made with 2000 or ACS 2014-2018 ACS data; 2) The ACS 2014-2018 ACS data includes the institutionalized population (e.g. persons in prisons and group homes), while this population is not included in 1990 or 2000; 3) the age groupings changed over the years.

Please take the following two concerns into account when viewing this data: 1) With the 1990 data the disabilities are listed as a "work disability" while this distinction is not made with 2000 or ACS 2014-2018 ACS data; 2) The ACS 2014-2018 ACS data includes the institutionalized population (e.g. persons in prisons and group homes), while this population is not included in 1990 or 2000.

The category Bachelor's Degree or Higher under the heading Educational Attainment Trends is a subset of the category High School Graduate or Higher.

Income of households. This includes the income of the householder and all other individuals 15 years old and over in the household, whether they are related to the householder or not. Because many households consist of only one person, average household income is usually less than average family income.

Income of families. In compiling statistics on family income, the incomes of all members 15 years old and over related to the householder are summed and treated as a single amount.

Age Trends median age for 1990 is not available.

Land Use Data

The Land Use information Indicates acreages and percentages for the generalized land use types used to group parcel-specific, existing land use assigned by the county property appraiser office according to the Florida Department of Revenue land use codes.

Community Facilities Data

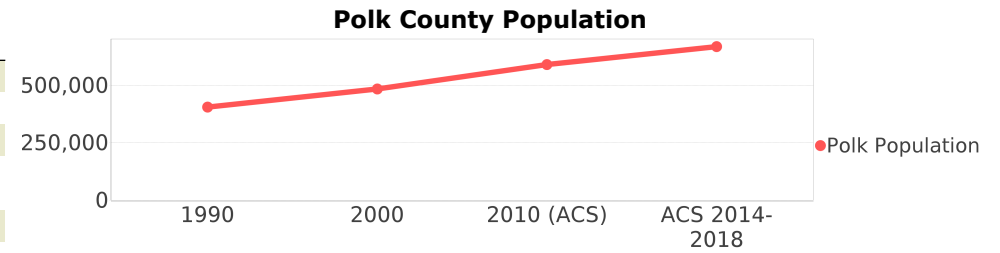
- Assisted Rental Housing Units - Identifies multifamily rental developments that receive funding assistance under federal, state, and local government programs to offer affordable housing as reported by the Shimberg Center for Housing Studies, University of Florida.
- Mobile Home Parks - Identifies approved or acknowledged mobile home parks reported by the Florida Department of Business and Professional Regulation and Florida Department of Health.
- Migrant Camps - Identifies migrant labor camp facilities inspected by the Florida Department of Health.
- Group Care Facilities - Identifies group care facilities inspected by the Florida Department of Health.

- Community Center and Fraternal Association Facilities - Identifies facilities reported by multiple sources.
- Law Enforcement Correctional Facilities - Identifies facilities reported by multiple sources.
- Cultural Centers - Identifies cultural centers including organizations, buildings, or complexes that promote culture and arts (e.g., aquariums and zoological facilities; arboreta and botanical gardens; dinner theaters; drive-ins; historical places and services; libraries; motion picture theaters; museums and art galleries; performing arts centers; performing arts theaters; planetariums; studios and art galleries; and theater producers stage facilities) reported by multiple sources.
- Fire Department and Rescue Station Facilities - Identifies facilities reported by multiple sources.
- Government Buildings - Identifies local, state, and federal government buildings reported by multiple sources.
- Health Care Facilities - Identifies health care facilities including abortion clinics, dialysis clinics, medical doctors, nursing homes, osteopaths, state laboratories/clinics, and surgicenters/walk-in clinics reported by the Florida Department of Health.
- Hospital Facilities - Identifies hospital facilities reported by multiple sources.
- Law Enforcement Facilities - Identifies law enforcement facilities reported by multiple sources.
- Parks and Recreational Facilities - Identifies parks and recreational facilities reported by multiple sources.
- Religious Center Facilities - Identifies religious centers including churches, temples, synagogues, mosques, chapels, centers, and other types of religious facilities reported by multiple sources.
- Private and Public Schools - Identifies private and public schools reported by multiple sources.
- Social Service Centers - Identifies social service centers reported by multiple sources.
- Veteran Organizations and Facilities

Polk County Demographic Profile

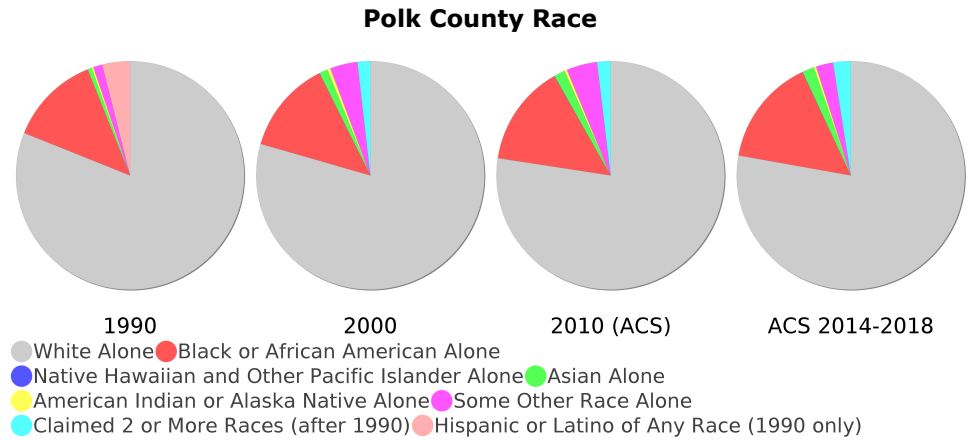
General Population Trends - Polk

Description	1990	2000	2010 (ACS)	ACS 2014-2018
Total Population	405,382	483,924	590,116	668,671
Total Households	155,969	187,233	223,689	231,260
Average Persons per Acre	0.315	0.376	0.458	0.52
Average Persons per Household	2.599	2.519	3.00	2.84
Average Persons per Family	3.016	3.05	3.133	3.51
Males	196,590	237,414	289,679	327,706
Females	208,792	246,510	300,437	340,965



Race and Ethnicity Trends - Polk

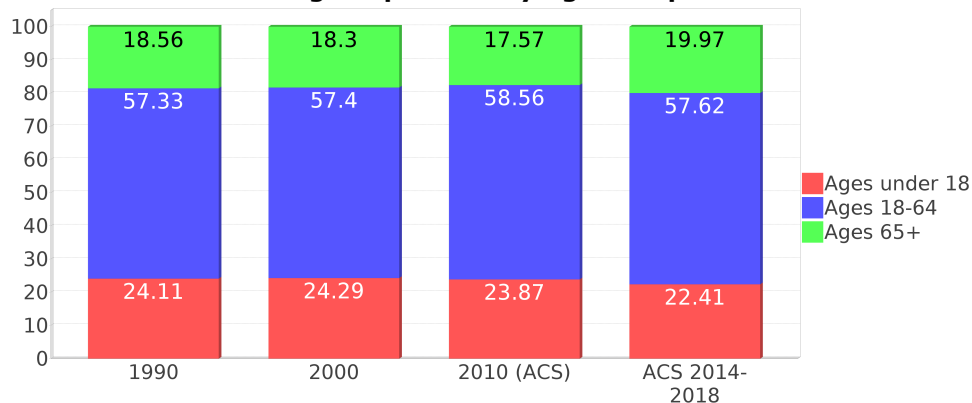
Description	1990	2000	2010 (ACS)	ACS 2014-2018
White Alone	341,952 (84.35%)	384,478 (79.45%)	456,933 (77.43%)	520,186 (77.79%)
Black or African American Alone	54,385 (13.42%)	63,709 (13.17%)	84,564 (14.33%)	101,690 (15.21%)
Native Hawaiian and Other Pacific Islander Alone	(NA)	159 (0.03%)	348 (0.06%)	314 (0.05%)
Asian Alone	2,429 (0.60%)	5,805 (1.20%)	9,264 (1.57%)	11,358 (1.70%)
American Indian or Alaska Native Alone	1,158 (0.29%)	2,172 (0.45%)	2,123 (0.36%)	2,189 (0.33%)
Some Other Race Alone	5,401 (1.33%)	18,781 (3.88%)	25,644 (4.35%)	16,184 (2.42%)
Claimed 2 or More Races	(NA)	8,820 (1.82%)	11,240 (1.90%)	16,750 (2.50%)
Hispanic or Latino of Any Race	16,600 (4.09%)	45,650 (9.43%)	97,811 (16.57%)	143,958 (21.53%)
Not Hispanic or Latino	388,782 (95.91%)	438,274 (90.57%)	492,305 (83.43%)	524,713 (78.47%)
Minority	73,650 (18.17%)	122,845 (25.39%)	213,326 (36.15%)	267,584 (40.02%)



Age Trends - Polk

Description	1990	2000	2010 (ACS)	ACS 2014-2018
Under Age 5	6.96%	6.35%	6.64%	5.85%
Ages 5-17	17.15%	17.94%	17.23%	16.56%
Ages 18-21	5.35%	4.97%	5.20%	5.05%
Ages 22-29	11.11%	9.09%	9.68%	10.06%
Ages 30-39	14.29%	13.60%	12.05%	12.06%
Ages 40-49	11.65%	13.63%	13.12%	11.88%
Ages 50-64	14.94%	16.11%	18.51%	18.57%
Age 65 and Over	18.56%	18.30%	17.57%	19.97%
-Ages 65-74	11.27%	9.93%	9.73%	11.30%
-Ages 75-84	5.84%	6.53%	5.93%	6.51%
-Age 85 and Over	1.45%	1.85%	1.91%	2.16%
Median Age	NA	39	39	40.3

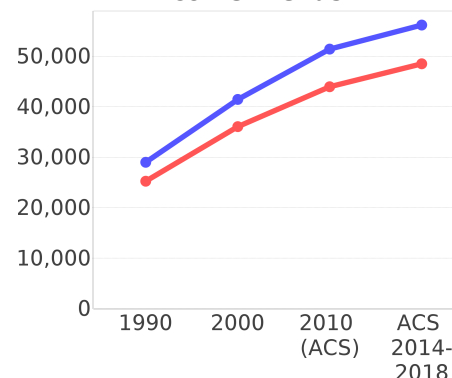
Percentage Population by Age Group - Polk



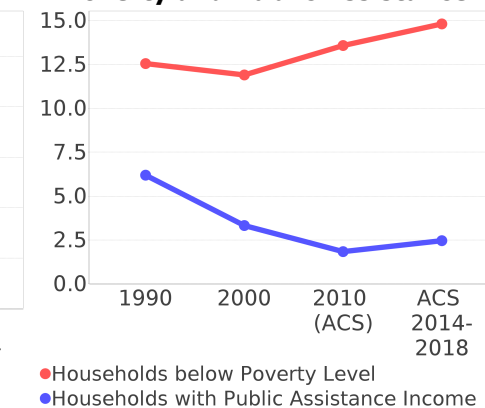
Income Trends - Polk

Description	1990	2000	2010 (ACS)	ACS 2014-2018
Median Household Income	\$25,216	\$36,036	\$43,946	\$48,500
Median Family Income	\$28,965	\$41,442	\$51,395	\$56,156
Population below Poverty Level	12.94%	12.94%	15.17%	16.59%
Households below Poverty Level	12.54%	11.89%	13.57%	14.80%
Households with Public Assistance Income	6.19%	3.32%	1.83%	2.46%

Income Trends



Poverty and Public Assistance



Disability Trends - Polk

See the Data Sources section below for an explanation about the differences in disability data among the various years.

Description	1990	2000	2010 (ACS)	ACS 2014-2018
Population 16 To 64 Years with a disability	23,997 (7.70%)	69,356 (15.61%)	NA (NA)	NA (NA)
Population 20 To 64 Years with a disability	NA (NA)	NA (NA)	NA (NA)	46,684 (12.87%)

Educational Attainment Trends - Polk

Age 25 and Over

Description	1990	2000	2010 (ACS)	ACS 2014-2018
Less than 9th Grade	31,499 (11.61%)	26,554 (8.14%)	26,321 (6.62%)	27,947 (6.05%)
9th to 12th Grade, No Diploma	55,338 (20.39%)	55,786 (17.10%)	45,563 (11.46%)	42,137 (9.13%)
High School Graduate or Higher	184,574 (68.01%)	243,868 (74.76%)	325,630 (81.92%)	391,687 (84.82%)
Bachelor's Degree or Higher	34,888 (12.85%)	48,669 (14.92%)	71,430 (17.97%)	92,267 (19.98%)

Language Trends - Polk

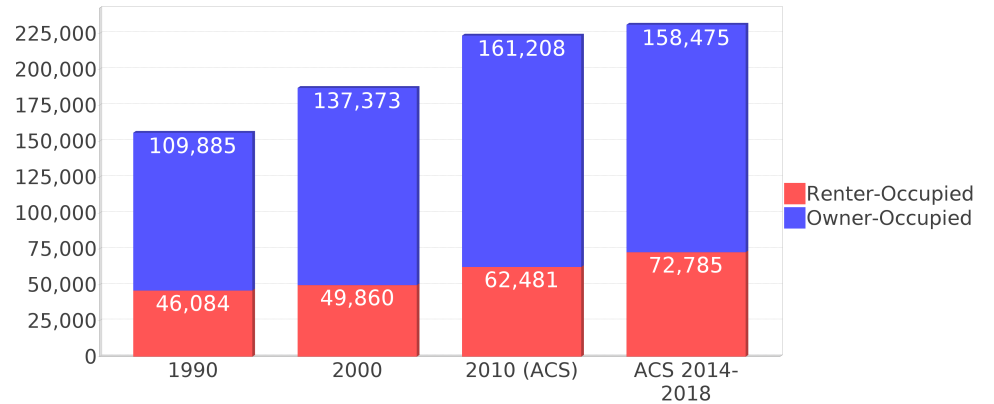
Age 5 and Over

Description	1990	2000	2010 (ACS)	ACS 2014-2018
Speaks English Well	5,121 (1.36%)	11,118 (2.45%)	19,850 (3.60%)	19,894 (3.16%)
Speaks English Not Well	NA (NA)	9,121 (2.01%)	18,814 (3.41%)	17,050 (2.71%)
Speaks English Not at All	NA (NA)	4,309 (0.95%)	8,314 (1.51%)	10,976 (1.74%)
Speaks English Not Well or Not at All	3,996 (1.06%)	13,430 (2.96%)	27,128 (4.92%)	28,026 (4.45%)
Speaks English Less than Very Well	NA (NA)	24,548 (5.42%)	46,978 (8.53%)	47,920 (7.61%)

Housing Trends - Polk

Description	1990	2000	2010 (ACS)	ACS 2014-2018
Total	186,225	226,376	277,547	291,796
Units per Acre	0.145	0.176	0.216	0.23
Single-Family Units	93,012	126,660	170,158	185,526
Multi-Family Units	24,543	31,447	39,463	43,514
Mobile Home Units	37,244	65,235	66,976	62,122
Owner-Occupied Units	109,885	137,373	161,208	158,475
Renter-Occupied Units	46,084	49,860	62,481	72,785
Vacant Units	30,256	39,143	53,858	60,536
Median Housing Value	\$60,700	\$69,800	\$141,900	\$135,400
Occupied Housing Units w/No Vehicle	12,534 (8.04%)	13,413 (7.16%)	12,764 (5.71%)	13,024 (5.63%)
Median year householder moved into unit - Total	NA	NA	NA	2010
Median year householder moved into unit - Owner Occupied	NA	NA	NA	2006
Median year householder moved into unit - Renter Occupied	NA	NA	NA	2013
Abroad 1 year ago	NA	NA	NA	4,679
Different house in United States 1 year ago	NA	NA	NA	91,864
Same house 1 year ago	NA	NA	NA	564,946
Geographical Mobility in the Past Year - Total	NA	NA	NA	564,946

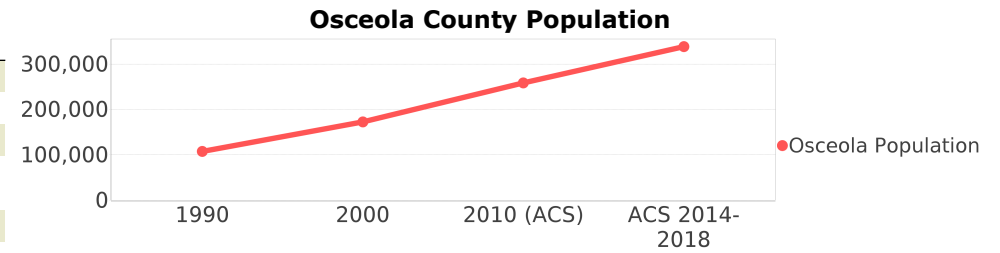
Housing Tenure - Polk



Osceola County Demographic Profile

General Population Trends - Osceola

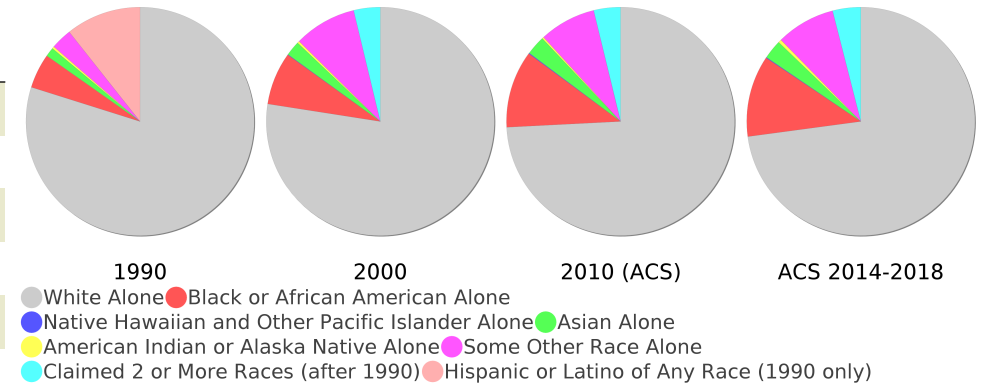
Description	1990	2000	2010 (ACS)	ACS 2014-2018
Total Population	107,728	172,493	258,531	338,619
Total Households	39,150	60,977	92,526	99,158
Average Persons per Acre	0.112	0.179	0.268	0.35
Average Persons per Household	2.752	2.79	3.00	3.40
Average Persons per Family	3.152	3.296	3.233	4.08
Males	52,716	85,185	126,812	166,820
Females	55,012	87,308	131,719	171,799



Race and Ethnicity Trends - Osceola

Description	1990	2000	2010 (ACS)	ACS 2014-2018
White Alone	96,231 (89.33%)	133,590 (77.45%)	191,793 (74.19%)	246,757 (72.87%)
Black or African American Alone	5,902 (5.48%)	12,873 (7.46%)	28,224 (10.92%)	38,975 (11.51%)
Native Hawaiian and Other Pacific Islander Alone	(NA)	103 (0.06%)	283 (0.11%)	358 (0.11%)
Asian Alone	1,571 (1.46%)	3,642 (2.11%)	7,090 (2.74%)	9,158 (2.70%)
American Indian or Alaska Native Alone	360 (0.33%)	493 (0.29%)	594 (0.23%)	1,526 (0.45%)
Some Other Race Alone	3,598 (3.34%)	15,286 (8.86%)	20,727 (8.02%)	28,338 (8.37%)
Claimed 2 or More Races	(NA)	6,506 (3.77%)	9,820 (3.80%)	13,507 (3.99%)
Hispanic or Latino of Any Race	12,866 (11.94%)	50,742 (29.42%)	112,439 (43.49%)	179,388 (52.98%)
Not Hispanic or Latino	94,862 (88.06%)	121,751 (70.58%)	146,092 (56.51%)	159,231 (47.02%)
Minority	20,289 (18.83%)	69,306 (40.18%)	160,393 (62.04%)	227,369 (67.15%)

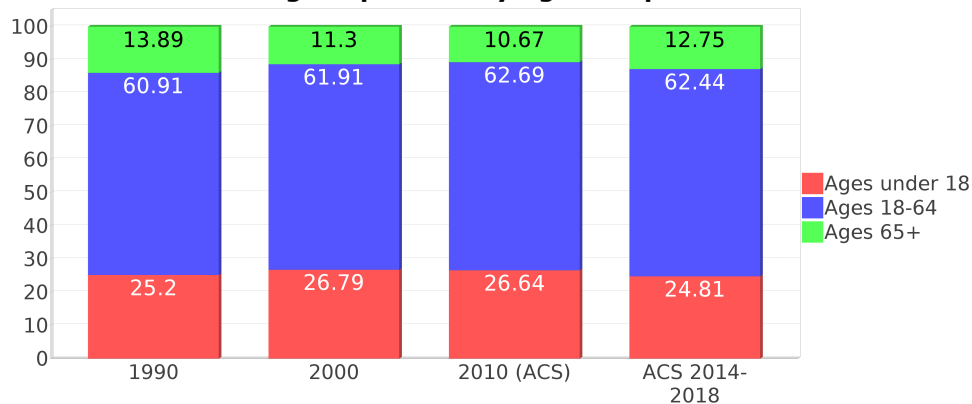
Osceola County Race



Age Trends - Osceola

Description	1990	2000	2010 (ACS)	ACS 2014-2018
Under Age 5	7.34%	6.65%	6.87%	6.40%
Ages 5-17	17.86%	20.14%	19.77%	18.41%
Ages 18-21	5.74%	4.99%	5.73%	5.16%
Ages 22-29	12.81%	11.16%	10.65%	11.60%
Ages 30-39	16.19%	16.18%	14.33%	14.01%
Ages 40-49	12.71%	14.88%	15.16%	14.34%
Ages 50-64	13.45%	14.70%	16.81%	17.33%
Age 65 and Over	13.89%	11.30%	10.67%	12.75%
-Ages 65-74	8.33%	6.38%	6.33%	7.80%
-Ages 75-84	4.19%	3.75%	3.37%	3.60%
-Age 85 and Over	1.38%	1.17%	0.97%	1.35%
Median Age	NA	35	35	35.8

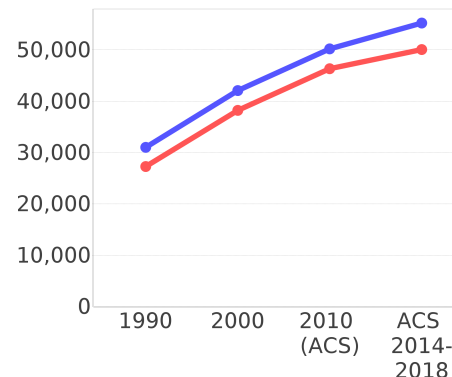
Percentage Population by Age Group - Osceola



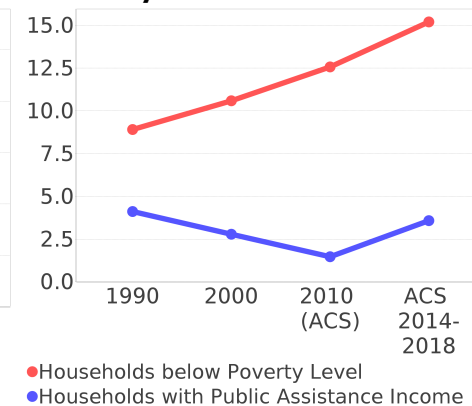
Income Trends - Osceola

Description	1990	2000	2010 (ACS)	ACS 2014-2018
Median Household Income	\$27,260	\$38,214	\$46,328	\$50,063
Median Family Income	\$31,006	\$42,061	\$50,203	\$55,221
Population below Poverty Level	9.39%	11.52%	13.25%	16.29%
Households below Poverty Level	8.91%	10.59%	12.57%	15.20%
Households with Public Assistance Income	4.11%	2.78%	1.47%	3.58%

Income Trends



Poverty and Public Assistance



Disability Trends - Osceola

See the Data Sources section below for an explanation about the differences in disability data among the various years.

Description	1990	2000	2010 (ACS)	ACS 2014-2018
Population 16 To 64 Years with a disability	5,763 (7.01%)	24,744 (15.56%)	NA (NA)	NA (NA)
Population 20 To 64 Years with a disability	NA (NA)	NA (NA)	NA (NA)	25,310 (12.54%)

Educational Attainment Trends - Osceola

Age 25 and Over

Description	1990	2000	2010 (ACS)	ACS 2014-2018
Less than 9th Grade	6,200 (8.83%)	6,810 (6.16%)	10,668 (6.48%)	11,247 (5.05%)
9th to 12th Grade, No Diploma	12,307 (17.52%)	16,285 (14.72%)	15,080 (9.16%)	18,216 (8.19%)
High School Graduate or Higher	51,737 (73.65%)	87,512 (79.12%)	138,898 (84.36%)	193,082 (86.76%)
Bachelor's Degree or Higher	7,873 (11.21%)	17,416 (15.75%)	30,086 (18.27%)	45,730 (20.55%)

Language Trends - Osceola

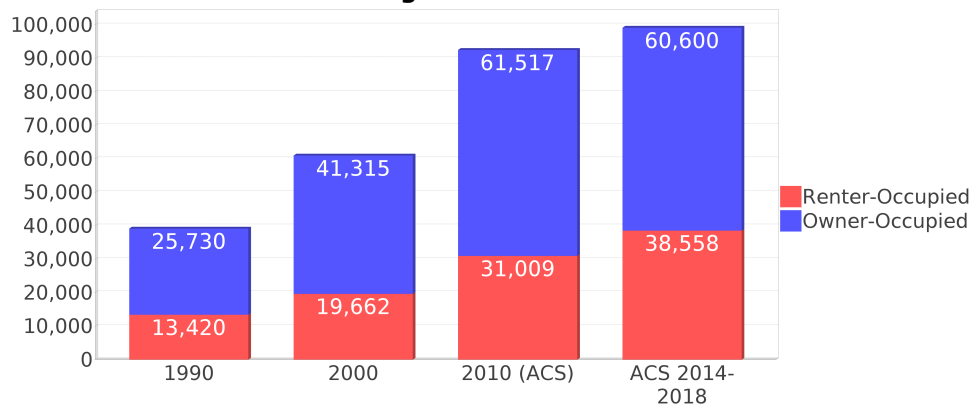
Age 5 and Over

Description	1990	2000	2010 (ACS)	ACS 2014-2018
Speaks English Well	3,735 (3.74%)	12,514 (7.77%)	22,965 (9.54%)	29,020 (9.16%)
Speaks English Not Well	NA (NA)	7,938 (4.93%)	16,582 (6.89%)	21,138 (6.67%)
Speaks English Not at All	NA (NA)	2,437 (1.51%)	5,376 (2.23%)	9,924 (3.13%)
Speaks English Not Well or Not at All	2,530 (2.54%)	10,375 (6.44%)	21,958 (9.12%)	31,062 (9.80%)
Speaks English Less than Very Well	NA (NA)	22,889 (14.21%)	44,923 (18.66%)	60,082 (18.96%)

Housing Trends - Osceola

Description	1990	2000	2010 (ACS)	ACS 2014-2018
Total	47,959	72,293	122,823	144,054
Units per Acre	0.05	0.075	0.127	0.15
Single-Family Units	23,390	46,340	79,778	94,601
Multi-Family Units	7,666	14,477	29,807	38,129
Mobile Home Units	7,802	10,989	12,794	11,179
Owner-Occupied Units	25,730	41,315	61,517	60,600
Renter-Occupied Units	13,420	19,662	31,009	38,558
Vacant Units	8,809	11,316	30,297	44,896
Median Housing Value	\$74,700	\$92,500	\$199,200	\$179,800
Occupied Housing Units w/No Vehicle	2,291 (5.85%)	3,492 (5.73%)	4,897 (5.29%)	5,249 (5.29%)
Median year householder moved into unit - Total	NA	NA	NA	2011
Median year householder moved into unit - Owner Occupied	NA	NA	NA	2008
Median year householder moved into unit - Renter Occupied	NA	NA	NA	2014
Abroad 1 year ago	NA	NA	NA	8,192
Different house in United States 1 year ago	NA	NA	NA	43,508
Same house 1 year ago	NA	NA	NA	282,806
Geographical Mobility in the Past Year - Total	NA	NA	NA	282,806

Housing Tenure - Osceola



County Data Sources

Demographic data reported is from the U.S. Decennial Census (1990, 2000) and the American Community Survey (ACS) 5-year estimates from 2006-2010 and ACS 2014-2018. The data was gathered at the county level. Depending on the dataset, the data represents 100% counts (Census Summary File 1) or sample-based information (Census Summary File 3 or ACS).

About the Census Data:

Use caution when comparing the 100% count data (Decennial Census) to the sample-based data (ACS). In any given year, about one in 40 or 2.5% of U.S. households will receive the ACS questionnaire. Over any five-year period, about one in eight households will receive the questionnaire, as compared to about one in six that received the long form questionnaire for the Decennial Census 2000. (Source: <http://mcdc.missouri.edu/pub/data/acs/Readme.shtml>) The U.S. Census Bureau provides help with this process:

[https://www.census.gov/programs-surveys/acs/guidance/comparing-acs-data/ACS 2014-2018.html](https://www.census.gov/programs-surveys/acs/guidance/comparing-acs-data/ACS%202014-2018.html)

Use caution when interpreting changes in Race and Ethnicity over time. Starting with the 2000 Decennial Census, respondents were given a new option of selecting one or more race categories. Also in 2000, the placement of the question about Hispanic origin changed, helping to increase responsiveness to the Hispanic-origin question. Because of these and other changes, the 1990 data on race and ethnicity are not directly comparable with data from later censuses. (Source: <http://www.census.gov/prod/2001pubs/c2kbr01-1.pdf>;
<http://www.census.gov/pred/www/rpts/Race%20and%20Ethnicity%20FINAL%20report.pdf>)

The "Minority" calculations are derived from Census and ACS data using both the race and ethnicity responses. On this report, "Minority" refers to individuals who list a race other than White and/or list their ethnicity as Hispanic/Latino. In other words, people who are multi-racial, any single race other than White, or Hispanic/Latino of any race are considered minorities.

Disability data is not included in the 2010 Decennial Census, or the 2006-2010 ACS. This data is available in the ACS 2014-2018 ACS.

Because of changes made to the Census and ACS questions between 1990 and ACS 2014-2018, disability variables should not be compared from year to year. For example: 1) With the 1990 data the disabilities are listed as a "work disability" while this distinction is not made with 2000 or ACS 2014-2018 ACS data; 2) The ACS 2014-2018 ACS data includes the institutionalized population (e.g. persons in prisons and group homes), while this population is not included in 1990 or 2000; 3) the age groupings changed over the years.

Please take the following two concerns into account when viewing this data: 1) With the 1990 data the disabilities are listed as a "work disability" while this distinction is not made with 2000 or ACS 2014-2018 ACS data; 2) The ACS 2014-2018 ACS data includes the institutionalized population (e.g. persons in prisons and group homes), while this population is not included in 1990 or 2000.

source:

<https://www.census.gov/people/disability/methodology/acs.html>

<https://www.census.gov/population/www/cen2000/90vs00/index.html>

The category Bachelor's Degree or Higher under the heading Educational Attainment Trends is a subset of the category High School Graduate or Higher.

Metadata

- Community and Fraternal Centers https://etdmpub.fla-etat.org/meta/gc_communitycenter.xml
- Correctional Facilities in Florida https://etdmpub.fla-etat.org/meta/gc_correctional.xml
- Cultural Centers in Florida https://etdmpub.fla-etat.org/meta/gc_culturecenter.xml
- Fire Department and Rescue Station Facilities in Florida https://etdmpub.fla-etat.org/meta/gc_firestat.xml
- Local, State, and Federal Government Buildings in Florida https://etdmpub.fla-etat.org/meta/gc_govbuild.xml
- Florida Health Care Facilities https://etdmpub.fla-etat.org/meta/gc_health.xml
- Hospital Facilities in Florida https://etdmpub.fla-etat.org/meta/gc_hospitals.xml
- Law Enforcement Facilities in Florida https://etdmpub.fla-etat.org/meta/gc_lawenforce.xml
- Florida Parks and Recreational Facilities https://etdmpub.fla-etat.org/meta/gc_parks.xml
- Religious Centers https://etdmpub.fla-etat.org/meta/gc_religion.xml
- Florida Public and Private Schools https://etdmpub.fla-etat.org/meta/gc_schools.xml
- Social Service Centers https://etdmpub.fla-etat.org/meta/gc_socialservice.xml
- Assisted Rental Housing Units in Florida https://etdmpub.fla-etat.org/meta/gc_assisted_housing.xml
- Group Care Facilities <https://etdmpub.fla-etat.org/meta/groupcare.xml>
- Mobile Home Parks in Florida https://etdmpub.fla-etat.org/meta/gc_mobilehomes.xml
- Migrant Camps in Florida <https://etdmpub.fla-etat.org/meta/migrant.xml>
- Veteran Organizations and Facilities https://etdmpub.fla-etat.org/meta/gc_veterans.xml
- Generalized Land Use - Florida DOT District 1 https://etdmpub.fla-etat.org/meta/d1_lu_gen.xml
- Generalized Land Use - Florida DOT District 5 https://etdmpub.fla-etat.org/meta/d5_lu_gen.xml
- Census Block Groups in Florida https://etdmpub.fla-etat.org/meta/e2_cenacs_cci.xml
- 1990 Census Block Groups in Florida https://etdmpub.fla-etat.org/meta/e2_cenblkgrp_1990_cci.xml
- 2000 Census Block Groups in Florida https://etdmpub.fla-etat.org/meta/e2_cenblkgrp_2000_cci.xml
- 2010 Census Block Groups in Florida https://etdmpub.fla-etat.org/meta/e2_cenblkgrp_2010_cci.xml